

Guide to the Arnold Arboretum Horticultural Library of Harvard University



The library uses a unique alpha-numeric classification system.

RED = CIRCULATING COLLECTION

BLACK = RESEARCH COLLECTION

A Bibliography and biographies
AO Public programs
Ba Horticultural color charts
Bd History
Be Paleobotany
Bf Plants in literature
Bi Ecology/environment
J Pathology/diseases/insects
L Landscape
La Landscape architecture
Lb Landscape preservation, restoration, and conservation
Lc Landscape interpretation
Ld Landscape archaeology
Le Urban landscapes
Lf Land use, management, and planning
Lg Community development and participation
Lh Landscape gardens
Li Reports (individual landscapes)
Q Dendrology
R Horticulture
Ra Encyclopedias
Rb General
Rc (by Geographic areas)
Rd Nursery
Rf Tree care and maintenance
Rg Historic nursery catalogs
Rh Propagation
Ri Street trees/urban forestry
Rj Dunes, seaside planting
Rk Hedges, screens, windbreaks
Rl Pomology, nuts, berries
Rm Pruning, espaliers
Rn Bonsai
Ro Vines, climbers
Rp Lawns, groundcovers, ornamental grasses
Rq Annuals
Rr Perennials
Rs Horticultural congresses, societies
Rt Special gardens
Ru Succulent plants
Rw Bulbs
Ry Fragrance, honey, and herb plants
S Agriculture, soils
TEXT Textbooks
U Natural History, Plant Lore
Uo Ornithology
Va Travel and exploration
W Hardiness zone and weather maps

C Botanic Gardens
D Herbaria, library, and museum collections
E Morphology/anatomy
F Cytology, plant breeding, genetics
FL Floras
G Physiology
H Evolution
Kd Taxonomy/nomenclature
Ke Registration lists
Lj Landscape Institute, Independent Projects
MH Monographs
N Cryptograms
O Economic plants
P Poisonous plants
T Forestry
Taa Dictionaries, encyclopedias, biographies
Tab Forestry textbooks
Tb Forestry
Tc Forest influences
Td Forest education
Tdb Arbor Day
Tdc Expositions
Te Management
Tf Engineering/surveying, construction
Tg Evaluation/taxation
Th Mensuration
Ti Policy
Tj Laws
Tk Conservation
Tl Silviculture
Tm Forest exploration, lumbering, lumber
Tn Forest products, timber trade
Tni Testing of wood
Tnk Uses of wood
Tngl Gums, resins
Tnlk Bark

CONTENTS

Introduction to the Library	2
Shelf Listing of the Library	8
Flora Index (<i>Alphabetical</i>)	15
Flora Index (<i>Numerical</i>)	20
Monographs (Family/Genus) Index (<i>Alphabetical</i>)	25
Monographs (Family/Genus) Index (<i>Numerical</i>)	28
Subject Index (<i>Alphabetical</i>)	30

END PAPERS

Classification System Overview	front
Floor Plan of the Library	back



*Ernest Henry Wilson and Charles Sprague Sargent in front of the
Prunus subhirtella at the Arnold Arboretum, 1915*

cover photograph: Arnold Arboretum Horticultural Library Reading Room by Sheila Connor

Introduction to the Library



The Arnold Arboretum Library began as the personal library of the Arboretum's first director, **Charles Sprague Sargent**. In 1893, the year the Hunnewell Administration building was constructed, Sargent established the library by donating his collection of over six thousand volumes to the Arboretum. From this nucleus, the collection has grown over the years to support the work of this internationally known scientific institution. Today the collection contains over 90,000 volumes. One third of the collection, the Horticultural Library, is housed here in Jamaica Plain. The rest of the Arnold Arboretum Library forms a part of the Botany Libraries which are located at the Harvard University Herbaria, 22 Divinity Avenue, Cambridge. Materials from the Botany libraries are regularly obtained for study at the Arnold Arboretum Horticultural Library.

The collection reflects the Arboretum's early interest in forestry and landscape design, its long-time involvement in plant collecting in Asia, and its post-World War II interest in ornamental horticulture. There is a rich collection of titles on landscape design, history, management, planning, conservation, botany, North Temperate Zone floras, monographs on plant families, horticulture, plant exploration, and the history of science. The collection contains more than 40,000 volumes and 30,000 images, including an archive that documents the Arboretum's history—which serves as a repository of 19th, 20th, and 21st century horticultural and botanical collections and supports the study, curation, and maintenance of woody plants.

The Horticultural Library's mission is to acquire and preserve a body of literature and photographic images to enable the Arnold Arboretum staff to curate, document, and study the Arnold Arboretum's living collection of woody plants. The library also pro-

vides researchers from the Harvard community, the Landscape Institute, our members, and the public with research assistance in botany, horticulture, landscape design, dendrology, and related fields.



Archival Collections

The Arnold Arboretum Archives are rich in documents that detail the institution's history, as well as its influences on botany and horticulture. The archives arrangement consists of 10 major categories: Administration, Research, Plant Exploration, Living Collections, Publications, Other Collections, Ephemera, Artifacts, General History, and Photograph Collections.

Personal Papers

In addition to the papers of the Arnold Arboretum's founder, Charles Sprague Sargent, and subsequent directors, the archives include field notes, travel records, and journals of plant hunters such as Ernest H. Wilson, Joseph Rock, and Frank N. Meyer.

Institutional Records

The records of the Arnold Arboretum document the institution's administrative and departmental activities, committee work, and special projects.

Correspondence

The correspondence files hold letters that were written and received by Arboretum staff members beginning in the 1880s, including Charles Sprague Sargent, Alfred Rehder, John G. Jack, Hugh M. Raup, Joseph H. Faul, and William H. Judd. Most letters concern issues of plant accessions, exploration, identification, taxonomy, and requests for plants.



Photograph Collections

Begun in the 1880s as an adjunct to the Arboretum's living collections, library, and herbarium, this collection of approximately 30,000 images documents individual taxa in their native habitats, landscape views of the areas of the world from which the plants were collected, taxa growing in the living collection of the Arboretum, plant collectors and their expeditions, horticultural and botanical techniques and practices, and the staff and activities of the Arboretum. The collection also records the evolution of the Arboretum's landscape—a landscape designed by Frederick Law Olmsted and Charles Sprague Sargent.

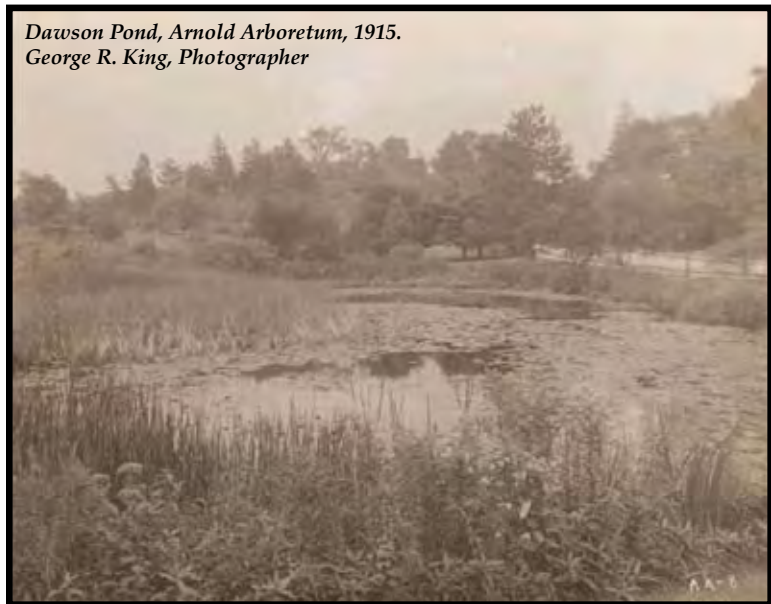
There is both an historic collection (ca. 1880-1940) of black and white prints mounted on boards, and a collection (1930-1990) of black and white prints enclosed in sleeves. Both are arranged alphabetically by genera and species. Landscape views are arranged alphabetically by country and place names.

Other collections include images of American and foreign arboreta, gardens, and parks (1890-1960) arranged by state or country; a lantern slide collection that includes botanical and horticultural

subjects arranged alphabetically by genera and/or subject; and a collection of 35mm slides of views at the Arnold Arboretum and plants and views at other arboreta and botanic gardens.

Many of these historic images are cataloged and available in Harvard's Visual Images Access database, VIA: <http://via.harvard.edu>. You may limit your search of VIA to the Arboretum's holdings by **Limiting repository to Arnold Arboretum Horticulture Library (Jamaica Plain)** from the drop down menu.

Beginning in 2002, Image Portal—a Digital Asset Management tool—became the repository for Arnold Arboretum images. This repository complements the collection of images of accessioned plants that is managed by the Curatorial Department on BG-BASE™.



Harvard Library Catalogs

Harvard University's library catalogs are free and open to the public. They are a great place to begin your research before you visit the Arnold Arboretum Horticultural Library.

HOLLIS

The titles held in the Arnold Arboretum Horticultural Library, Jamaica Plain, are catalogued in HOLLIS, the Harvard OnLine Library Information System, located at <http://holliscatalog.harvard.edu>. Our materials are identified in the catalog as **Botany Arboretum**. In addition to the collection in Jamaica Plain, Arnold Arboretum holdings form part of the combined collections of the Botany Libraries located in Cambridge, at the **Harvard University Herbaria**. The Arboretum titles held in Cambridge are identified as **Botany Arnold (Cambr)**.

OASIS

This database allows users to search Harvard's archival finding aids for manuscript materials. It is located at <http://oasis.harvard.edu>. While not all finding aids are included, there are over forty archival and manuscript repositories at Harvard, including the Arnold Arboretum, which have contributed materials.

VIA

The Visual Information Access (VIA) system is Harvard's union catalog of visual resources. It includes images of slides, photographs, objects, and artifacts in the university's collections. The catalog can be found at: <http://via.harvard.edu>. The Arnold Arboretum has contributed over 8,700 historical views of its landscape, as well as expedition photographs by early 20th century plant collectors such as E.H. Wilson, Joseph Rock, and Frank Meyer.

Accessing the Collections

The Arnold Arboretum Horticultural Library serves our staff, the Harvard community of students and scholars, Arboretum members, and the public. Our librarians are available for refer-

ence questions, introductions to the library and archives, and interlibrary loan requests for onsite use. The library is available to groups of faculty and students. A portion of the book collection is available self serve to the public in the reading room; the remainder must be paged by the library staff.

Hours

Monday - Saturday 10 am to 4 pm, excluding holidays.

Directions

The Library is located on the 3rd Floor of the Hunnewell Building, 125 Arborway, Jamaica Plain, Massachusetts.

For additional directions, please consult the Arnold Arboretum website at: <http://arboretum.harvard.edu/visitors/directions.html>

Disability services

Access for persons with disabilities is through the main entrance of the building. An elevator, accessible restrooms, and retrieval of library materials are available.

Photocopying

Black and white and color copiers are available. Self-serve black and white copies are \$.10 each. Color copies are \$1.00 each. Off-site requests for photocopies may be submitted by email. For off-site black and white photocopy requests, the charge is \$15.00 plus \$.20 per page. A scanner is also available in the library for the use of patrons.

Permissions

For permission to publish, forms should be submitted to the Arnold Arboretum Horticultural Library. Users are responsible for adhering to copyright laws.

SHELF LISTING OF THE LIBRARY

(RED = circulating collection / BLACK = research collection)

- A** BIOGRAPHY
AO PUBLIC PROGRAMS interpretation, visitor behavior, funding sources, volunteers, public relations
- Ba** HORTICULTURAL color charts and dictionaries, botanical illustration, photography
Bd HISTORY of botany, forestry, horticulture garden design, gardens, gardening, landscape architecture, plant introduction
- Be** PALEOBOTANY
Bf PLANTS in literature
Bi ECOLOGY / ENVIRONMENT
(North Temperate Zone) including conservation, rare and endangered plants, seed dispersal, landscape and urban ecology
- C** BOTANIC GARDENS, ARBORETA, and PRIVATE ESTATES inventories, plants lists, histories and descriptions of, and guides to (*by geographic area*)
- Cab** - Canada
Cac - United States
Cb - West Indies, Cuba
Cc - Mexico, Central America
Cd - South America
Ce - Europe (General)
Cea - Austria
Ceb - Balkans
Cec - Belgium, Luxembourg
Ced - British Islands
Cef - France
Ceg - Germany
Ceh - Iberian Peninsula
Cei - Italy
Cen - Netherlands
Cer - Russia
Ces - Scandinavia
Cf - Asia (Japan)
Cfi - India

Cg	- Africa
Ch	- Australasia
Ck	- Atlantic Ocean Islands
Cl	- Indian Ocean Islands
D	HERBARIA, LIBRARY, AND MUSEUM COLLECTIONS, management of (<i>including</i> pest control databases, environmental requirements)
E	MORPHOLOGY / ANATOMY
F	CYTOLOGY / PLANT BREEDING / GENETICS
FL	FLORA (see FLORA INDEX , page 15)
G	PHYSIOLOGY
H	EVOLUTION
J	PATHOLOGY / DISEASES / INSECTS
Kd	TAXONOMY / NOMENCLATURE
Ke	REGISTRATION LISTS (<i>including</i> some herbaceous plants)
L	LANDSCAPE
La	LANDSCAPE ARCHITECTURE
Lb	LANDSCAPE PRESERVATION, RESTORATION, CONSERVATION
Lc	LANDSCAPE INTERPRETATION
Ld	LANDSCAPE ARCHAEOLOGY
Le	URBAN LANDSCAPE
Lf	LAND USE, MANAGEMENT, PLANNING
Lg	COMMUNITY DEVELOPMENT AND PARTICIPATION
Lh	LANDSCAPE GARDENS (<i>by geographic area</i>)
Li	REPORTS ON INDIVIDUAL LANDSCAPES (<i>by geographic area</i>)
Lj	LANDSCAPE INSTITUTE, INDEPENDENT PROJECTS
MH	MONOGRAPHS (see MONOGRAPHS INDEX , page 25)
N	CRYPTOGRAMS
O	ECONOMIC PLANTS
P	POISONOUS PLANTS

Q	DENDROLOGY
Q 40	- Europe
Q 50	- Asia
Q 60	- Africa
Q 70	- North America
Q 71	- Canada
Q 73	- United States
Q 80	- South America
Q 90	- Australasia
Q 99	Historic trees, Trees of specific cities, Trees of note, Champion trees
R	HORTICULTURE
Ra	HORTICULTURAL ENCYCLOPEDIAS
Rb	HORTICULTURE, GENERAL
Rc	HORTICULTURE (<i>by geographic area</i> ; use numbers from <i>FLORA INDEX</i> , page 15)
Rd	NURSERY
Rf	TREE CARE AND MAINTENANCE
Rg	HISTORIC NURSERY CATALOGS, PLANT SOURCES
Rh	PROPAGATION
Ri	STREET TREES, SHADE TREES, URBAN FORESTRY
Rj	DUNES AND SEASIDE PLANTING
Rk	HEDGES, SCREENS, AND WINDBREAKS
RI	POMOLGY, NUTS, AND BERRIES (<i>by geographic area</i>)
Rlac	- United States
Rld	- Europe
Rldd	- British Isles
Rldf	- France
Rldg	- Germany
Rldk	- Netherlands
Rldl	- Russia
Rle	- Asia
Rlf	- Africa
Rlg	- Australia
Rm	PRUNING AND ESPAILERS
Rn	BONSAI
Ro	VINES, CLIMBERS
Rp	LAWNS, GROUNDCOVERS, ORNAMENTAL GRASSES

Rq	ANNUALS
Rr	PERENNIALS
Rs	HORTICULTURAL CONGRESSES, SOCIETIES
Rt	ROCK GARDENS, SPECIAL GARDENS
Ru	SUCCULENT PLANTS
Rw	BULBS
Ry	FRAGRANCE, HONEY PLANTS, HERBS
S	SOILS
T	FORESTRY
Taa	FORESTRY DICTIONARIES, ENCYCLOPEDIAS, BIOGRAPHIES
Tab	FORESTRY TEXTBOOKS
Tb	FORESTRY (<i>by geographic area</i>)
Tbaa	- Alaska
Tbab	- Canada
Tbac	- United States
Tbb	- Mexico, Central America, West Indies
Tbc	- South America
Tbd	- Europe
Tbds	- Austria, Hungary
Tbdb	- Balkan Countries
Tbdc	- Belgium, Luxembourg
Tbdd	- British Isles
Tbdf	- France
Tbdg	- Germany
Tbdh	- Spain, Portugal
Tbdi	- Italy
Tbdk	- Netherlands
Tbdl	- Russia, Poland, Lithuania, Finland
Tbdm	- Scandinavia
Tbe	- Asia, China, India, Japan, Turkey (Asiatic), Malaysia, Indochina
Tbf	- Africa
Tbg	- Australia
Tc	FOREST INFLUENCES
Td	FOREST EDUCATION
Tdb	ARBOR DAY
Tdc	EXPOSITIONS
Te	FOREST MANAGEMENT
TEXT	TEXTBOOKS, GENERAL
Tf	FOREST ENGINEERING, CONSTRUCTION, SURVEYING

Tg	FOREST EVALUATION, TAXATION
Th	MENSURATION
Ti	FOREST POLICY
Tj	FOREST LAWS
Tk	FOREST CONSERVATION, ECOLOGY
Tl	SILVICULTURE, GENERAL
	<i>(by geographic area)</i>
Tla	- North America
Tlaa	- Alaska
Tlab	- Canada
Tlac	- United States
Tlb	- Mexico, Central America, West Indies
Tlc	- South America
Tld	- Europe
Tlda	- Austria, Hungary
Tldc	- Belgium, Luxembourg
Tldd	- British Isles
Tldf	- France
Tldg	- Germany
Tldh	- Spain, Portugal
Tldi	- Italy
Tldj	- Mediterranean Islands
Tldk	- Netherlands
Tldl	- Russia
Tldm	- Scandinavia
Tldn	- Switzerland
Tle	- Asia, China, India, Japan, Turkey (Asiatic), Malaysia, Indochina
Tlf	- Africa
Tlg	- Australia
Tll	- Indian Ocean Islands, Pacific Ocean Islands
Tm	FOREST EXPLORATION, LUMBERING, LUMBER
Tn	FOREST PRODUCTS, TIMBER TRADE
	<i>(by geographic area)</i>
Tnac	- United States
Tnc	- South America
Tnd	- Great Britain
Tne	- Asia
Tnf	- Africa
Tng	- Australia

Tni	TESTING OF TIMBER
Tnk	USES OF WOOD
Tnlk	BARK
Tnlg	GUMS AND RESIN
U	NATURAL HISTORY, PLANT LORE
Uo	ORNATHOLOGY
V	TRAVEL AND EXPLORATION, botanical, horticultural emphases (<i>by geographic area</i>)
Va	- North America
Vaa	- Alaska
Vab	- Canada
Vac	- United States
Vb	- Mexico / Central America / West Indies
Vc	- South America
Vd	- Europe
Ve	- Asia
Vf	- Africa
Vg	- Australasia
Vi	- Islands
W	HARDINESS ZONE AND WEATHER MAPS

"Acer Rubrum" Isaac Sprague. The Arnold Arboretum of Harvard University



ACER RUBRUM.

Red Maple.

FLORA (ALPHABETICAL INDEX)

- FL55 - AFGHANISTAN
FL60 - AFRICA (*see also* East Africa; North Africa; South Africa; West Africa)
FL76.1 - ALABAMA
FL79.8 - ALASKA
FL99 - ANTARCTIC REGION
FL57 - ARABIA
FL57 - ARABIAN PENINSULA
FL82 - ARGENTINA
FL98 - ARCTIC REGIONS
FL79.1 - ARIZONA
FL76.7 - ARKANSAS
FL50 - ASIA
FL56 - ASIATIC RUSSIA
FL97 - ATLANTIC OCEAN ISLANDS
FL94 - AUSTRALASIA (*see also* Australia, Hawaii, New Caldonia, etc.)
FL94 - AUSTRALIA
FL43.6 - AUSTRIA
FL72.96 - BAHAMA ISLANDS
FL57 - BAHRAIN
FL72.2 - BAJA
FL47.4 - BALTIC PROVINCES
FL55 - BALUCHISTAN
FL49.3 - BELGIUM
FL72.99 - BERMUDA
FL83 - BOLIVIA
FL81 - BRAZIL
FL71.1 - BRITISH COLUMBIA
FL72.82 - BRITISH HONDURAS (*see also* Honduras)
FL49.7 - BULGARIA
FL54 - BURMA (*see also* Myanmar)
FL79.4 - CALIFORNIA
FL54 - CAMBODIA
FL71 - CANADA (*see also* British Columbia, Labrador, New Brunswick, etc.)
FL72.91 - CARIBBEAN
FL 86 - COLOMBIA
FL78.8 - COLORADO
FL74.6 - CONNECTICUT

FL72.86	- COSTA RICA
FL72.91	- CUBA
FL75.1	- DELAWARE
FL75.3	- DISTRICT OF COLUMBIA
FL75.9	- FLORIDA
FL75.8	- GEORGIA
FL77	- GREAT LAKES STATES (United States)
FL98	- GREENLAND
FL72.81	- GUATEMALA
FL76	- GULF STATES (United States)
FL72.94	- HAITI
FL95.9	- HAWAII
FL72.83	- HONDURAS
FL79.6	- IDAHO
FL77.3	- ILLINOIS
FL77.2	- INDIANA
FL54	- INDOCHINA (Vietnam, Laos, Cambodia)
FL54	- INDONESIA
FL77.7	- IOWA
FL57	- ISRAEL
FL45	- ITALY
FL72.92	- JAMAICA
FL52	- JAPAN
FL58.5	- JAVA
FL78.1	- KANSAS
FL76.9	- KENTUCKY
FL51.9	- KOREA
FL57	- KUWAIT
FL71.9	- LABRADOR
FL77	- LAKE STATES (United States)
FL54	- LAOS
FL47.4	- LATVIA
FL72.97	- LEEWARD ISLANDS
FL47.4	- LITHUANIA
FL76.3	- LOUISIANA
FL49.3	- LUXEMBOURG
FL65	- MADAGASCAR
FL74.1	- MAINE
FL58	- MALAYSIA
FL71.2	- MANITOBA
FL75.2	- MARYLAND
FL74.4	- MASSACHUSETTS

- FL72.5 - MEXICO
- FL77.4 - MICHIGAN
- FL57 - MIDDLE EAST
- FL77.6 - MINNESOTA
- FL76.2 - MISSISSIPPI
- FL77.8 - MISSOURI
- FL78.6 - MONTANA
- FL78 - MOUNTAIN STATES (United States)
- FL54 - MYANMAR (Burma)
- FL57 - NEAR and MIDDLE EAST,
WEST OF AFGHANISTAN
- FL78.2 - NEBRASKA
- FL49.2 - NETHERLANDS
- FL79.3 - NEVADA
- FL71.5 - NEW BRUNSWICK
- FL94.6 - NEW CALEDONIA
- FL 86 - NEW GRANADA (*see also* Colombia)
- FL74.2 - NEW HAMPSHIRE
- FL94.6 - NEW HEBRIDES
- FL74.9 - NEW JERSEY
- FL78.9 - NEW MEXICO
- FL74.7 - NEW YORK
- FL94.5 - NEW ZEALAND
- FL71.8 - NEWFOUNDLAND
- FL72.85 - NICARAGUA
- FL70 - NORTH AMERICA (*see also* Canada)
- FL74 - NORTH ATLANTIC STATES (United States)
- FL75.6 - NORTH CAROLINA
- FL77 - NORTH CENTRAL or
LAKE STATES (United States)
- FL98 - NORTH POLE
- FL74 - NORTHEASTERN or
NORTH ATLANTIC STATES (United States;
includes Maine, Massachusetts, New
Hampshire, New Jersey, New York,
Pennsylvania, Rhode Island, Vermont)
- FL61 - NORTHERN AFRICA
- FL71.2 - NORTHWEST TERRITORIES, CANADA
- FL48.1 - NORWAY
- FL71.6 - NOVA SCOTIA, CANADA
- FL77.1 - OHIO
- FL76.6 - OKLAHOMA

- FL71.3 - ONTARIO, CANADA
- FL79.5 - OREGON
- FL95 - PACIFIC OCEAN ISLANDS
- FL79 - PACIFIC STATES (United States)
- FL57 - PALESTINE (*see also* Near and Middle East,
West of Afghanistan)
- FL72.87 - PANAMA
- FL89 - PARAGUAY
- FL82 - PATAGONIA
- FL74.8 - PENNSYLVANIA
- FL85 - PERU
- FL58.9 - PHILIPPINES
- FL47.5 - POLAND
- FL46.9 - PORTUGAL
- FL71.7 - PRINCE EDWARD ISLAND, CANADA
- FL72.95 - PUERTO RICO
- FL71.4 - QUEBEC, CANADA
- FL74.5 - RHODE ISLAND
- FL49.8 - ROMANIA
- FL47 - RUSSIA (*see also* Asiatic Russia)
- FL72.84 - SALVADOR
- FL72.93 - SANTO DOMINGO
- FL45.9 - SARDINIA
- FL48 - SCANDINAVIA
- FL41 - SCOTLAND
- FL53 - SIBERIA
- FL45.8 - SICILY
- FL54 - SINGAPORE
- FL64 - SOUTH AFRICA
- FL80 - SOUTH AMERICA
(*see also* Brazil, Peru, Venezuela, etc.)
- FL75.7 - SOUTH CAROLINA
- FL76 - SOUTH CENTRAL or GULF STATES
(United States; *includes* Alabama, Arkansas,
Louisiana, Mississippi, Oklahoma, Texas)
- FL78.3 - SOUTH DAKOTA
- FL99 - SOUTH POLE
- FL54 - SOUTHEAST ASIA
- FL75 - SOUTHEASTERN or SOUTH ATLANTIC STATES
(United States; *includes* Delaware, District of
Columbia, Florida, Georgia, Maryland, North
Carolina, South Carolina, Virginia)

FL46	- SPAIN
FL48.5	- SWEDEN
FL49.4	- SWITZERLAND
FL57	- SYRIA (<i>see also</i> Near and Middle East, West of Afghanistan)
FL76.8	- TENNESSEE
FL76.4	- TEXAS
FL54	- THAILAND
FL55	- TIBET
FL72.98	- TOBAGO
FL72.98	- TRINIDAD
FL57	- TURKEY, ASIA (<i>see also</i> Near and Middle East, West of Afghanistan)
FL49.6	- TURKEY, EUROPE
FL47.7	- UKRAINE
FL73	- UNITED STATES
FL79.2	- UTAH
FL89	- URUGUAY
FL47	- USSR
FL87	- VENEZUELA
FL74.3	- VERMONT
FL54	- VIETNAM (Indochina)
FL75.5	- VIRGINIA
FL42.9	- WALES
FL79.7	- WASHINGTON
FL62	- WEST AFRICA
FL72.9	- WEST INDIES
FL75.4	- WEST VIRGINIA
FL78	- WESTERN or MOUNTAIN STATES (United States)
FL77.5	- WISCONSIN
FL78.7	- WYOMING
FL57	- YEMEN
FL72.6	- YUCATAN
FL49.7	- YUGOSLAVIA

FLORA (NUMERICAL INDEX)

FL40	- EUROPE
FL41	- SCOTLAND
FL41.5	- IRELAND
FL42	- ENGLAND
FL42.9	- WALES
FL43	- GERMANY
FL43.6	- AUSTRIA
FL43.7	- CZECHOSLOVAKIA
FL43.9	- HUNGARY
FL44	- FRANCE
FL45	- ITALY
FL45.8	- SICILY
FL45.9	- SARDINIA
FL46	- SPAIN
FL46.9	- PORTUGAL
FL47	- RUSSIA
FL47.1	- FINLAND
FL47.4	- BALTIC PROVINCES
FL47.5	- POLAND
FL47.7	- UKRAINE
FL47.9	- CAUCASIA
FL48	- SCANDINAVIA
FL48.1	- NORWAY
FL48.5	- SWEDEN
FL48.9	- DENMARK
FL49.1	- ICELAND, FAROE ISLANDS
FL49.2	- NETHERLANDS
FL49.3	- BELGIUM / LUXEMBOURG
FL49.4	- SWITZERLAND
FL49.5	- GREECE
FL49.6	- TURKEY, EUROPE
FL49.7	- YUGOSLAVIA (<i>includes</i> Serbia, Montenegro)
FL49.8	- ROMANIA
FL50	- ASIA
FL51	- CHINA
FL51.9	- KOREA
FL52	- JAPAN
FL52.9	- TAIWAN (Formosa)
FL53	- SIBERIA
FL54	- MYANMAR (Burma)

FL54	- THAILAND
FL54	- INDOCHINA (Vietnam, Laos, Cambodia)
FL54	- SOUTHEAST ASIA
FL54	- SINGAPORE
FL55	- AFGHANISTAN
FL55	- BALUCHISTAN
FL55	- SRI LANKA (Ceylon)
FL55	- INDIA
FL56	- ASIATIC RUSSIA
FL57	- ARABIA (Kuwait, Bahrain, Yemen, etc.)
FL57	- CYPRUS
FL57	- IRAN / IRAQ
FL57	- NEAR & MIDDLE EAST, WEST OF AFGHANISTAN
FL57	- PALESTINE / ISRAEL
FL57	- SYRIA
FL57	- TURKEY, ASIA
FL58	- MALAYSIA
FL58.5	- JAVA
FL58.9	- PHILLIPINES
FL60	- AFRICA
FL61	- NORTHERN AFRICA
FL62	- WEST AFRICA
FL63	- EAST AFRICA
FL64	- SOUTH AFRICA
FL65	- MADAGASCAR
FL70	- NORTH AMERICA
FL71	- CANADA
FL71.1	- BRITISH COLUMBIA
FL71.2	- NORTHWEST TERRITORIES, MANITOBA, ALBERTA
FL71.3	- ONTARIO
FL71.4	- QUEBEC
FL71.5	- NEW BRUNSWICK
FL71.6	- NOVA SCOTIA
FL71.7	- PRINCE EDWARD ISLAND
FL71.8	- NEWFOUNDLAND
FL71.9	- LABRADOR
FL72	- CENTRAL AMERICA
FL72.1	- CENTRAL AMERICA
FL72.2	- BAJA CALIFORNIA
FL72.5	- MEXICO

- FL72.6 - SOUTHERN GULF STATES / YUCATAN
- FL72.81 - GUATEMALA
- FL72.82 - BRITISH HONDURAS
- FL72.83 - HONDURAS
- FL72.84 - SALVADOR
- FL72.85 - NICARAGUA
- FL72.86 - COSTA RICA
- FL72.87 - PANAMA
- FL72.9 - WEST INDIES
- FL72.91 - CUBA
- FL72.92 - JAMAICA
- FL72.93 - SANTO DOMINGO
- FL72.94 - HAITI
- FL72.95 - PUERTO RICO
- FL72.96 - BAHAMA ISLANDS
- FL72.97 - LEEWARD ISLANDS
- FL72.98 - TRINIDAD & TOBAGO
- FL72.99 - BERMUDA
- FL73 - UNITED STATES
- FL74 - NORTHEASTERN or NORTH ATLANTIC STATES
- FL74.1 - MAINE
- FL74.2 - NEW HAMPSHIRE
- FL74.3 - VERMONT
- FL74.4 - MASSACHUSETTS
- FL74.5 - RHODE ISLAND
- FL74.6 - CONNECTICUT
- FL74.7 - NEW YORK
- FL74.8 - PENNSYLVANIA
- FL74.9 - NEW JERSEY
- FL75 - SOUTHEASTERN or SOUTH ATLANTIC STATES
- FL75.1 - DELAWARE
- FL75.2 - MARYLAND
- FL75.3 - DISTRICT OF COLUMBIA
- FL75.4 - WEST VIRGINIA
- FL75.5 - VIRGINIA
- FL75.6 - NORTH CAROLINA
- FL75.7 - SOUTH CAROLINA
- FL75.8 - GEORGIA
- FL75.9 - FLORIDA
- FL76 - SOUTH CENTRAL or GULF STATES

FL76.1	- ALABAMA
FL76.2	- MISSISSIPPI
FL76.3	- LOUISIANA
FL76.4	- TEXAS
FL76.5	- OKLAHOMA
FL76.6	- ARKANSAS
FL76.8	- TENNESSEE
FL76.9	- KENTUCKY
FL77	- NORTH CENTRAL or LAKE STATES
FL77.1	- OHIO
FL77.2	- INDIANA
FL77.3	- ILLINOIS
FL77.4	- MICHIGAN
FL77.5	- WISCONSIN
FL77.6	- MINNESOTA
FL77.7	- IOWA
FL77.8	- MISSOURI
FL78	- WESTERN or MOUNTAIN STATES
FL78.1	- KANSAS
FL78.2	- NEBRASKA
FL78.3	- SOUTH DAKOTA
FL78.4	- NORTH DAKOTA
FL78.6	- MONTANA
FL78.7	- WYOMING
FL78.8	- COLORADO
FL78.9	- NEW MEXICO
FL79	- PACIFIC STATES
FL79.1	- ARIZONA
FL79.2	- UTAH
FL79.3	- NEVADA
FL79.4	- CALIFORNIA
FL79.5	- OREGON
FL79.6	- IDAHO
FL79.7	- WASHINGTON
FL79.8	- ALASKA
FL80	- SOUTH AMERICA
FL81	- BRAZIL
FL82	- ARGENTINA / PATAGONIA
FL83	- BOLIVIA
FL85	- PERU
FL86	- COLOMBIA / NEW GRANADA / ECUADOR / GALAPAGOS

- FL87 - VENEZUELA
- FL88 - GUYANA
- FL89 - PARAGUAY / URAGUAY
- FL94 - AUSTRALASIA
- FL94 - AUSTRALIA
- FL94.4 - TASMANIA
- FL94.5 - NEW ZEALAND
- FL94.6 - NEW CALEDONIA / NEW HEBRIDES
- FL95 - PACIFIC OCEAN ISLANDS
- FL95.9 - HAWAII
- FL96 - INDIAN OCEAN ISLANDS
- FL97 - ATLANTIC OCEAN ISLANDS
- FL98 - ARCTIC REGIONS / GREENLAND /
NORTH POLE
- FL99 - ANTARCTIC REGION / SOUTH POLE

MONOGRAPHS (ALPHABETICAL INDEX)

MH266	- ACANTHACEAE
MH163	- ACERACEAE
MH84	- AIZOACEAE
MH40	- AMARYLLIDACEAE
MH153	- ANACARDIACEAE
MH157	- AQUIFOLIACEAE
MH23	- ARACEAE
MH227	- ARALIACEAE
MH248	- ASCLEPIADACEAE
MH19.1	- BAMBUSEAE
MH208	- BEGONIACEAE
MH93	- BERBERIDACEAE
MH61	- BETULACEAE
MH258	- BIGNONIACEAE
MH252	- BORAGINACEAE
MH32	- BROMELIACEAE
MH149	- BUXACEAE
MH210	- CACTACEAE
MH186.2	- CAMELLIA
MH276	- CAMPANILLACEAE
MH107	- CAPPARIDACEAE
MH271	- CAPRIFOLIACEAE
MH205	- CARICACEAE
MH62.1	- CASTANEA
MH270.1	- CINCHONA
MH137.1	- CITRUS
MH21.1	- COCONUT
MH270.2	- COFFEA
MH280	- COMPOSITAE
MH229	- CONNACEAE
MH115	- CRASSULACEAE
MH126.1	- CRATAEGUS
MH275	- CUCURBITACEAE
MH20	- CYPERACEAE
MH233.2	- ERICA
MH233	- ERICACEAE
MH222.1	- EUCALYPTUS
MH147	- EUPHORBIACEAE
MH62	- FAGACEAE
MH62.2	- FAGUS

MH246	- GENTIANACEAE
MH262	- GESNERIACEAE
MH19	- GRAMINEAE
MH123	- HAMMELIDACEAE
MH233.2	- HEATHERS
MH44	- IRIDACEAE
MH60	- JUGLANDACEAE
MH254	- LABIATAE
MH102	- LAURACEAE
MH128	- LEGUMINOSAE
MH38	- LILIACEAE
MH67	- LORANTHACEAE
MH216	- LYTHRACEAE
MH95	- MAGNOLIACEAE
MH202	- MALESHERBIACEAE
MH126.2	- MALUS
MH175	- MALVACEAE
MH140	- MELIACEAE
MH45	- MUSACEAE
MH222	- MYRTACEAE
MH88	- NYMPHAECEAE
MH224	- OENOTHERACEAE
MH243	- OLEACEAE
MH50	- ORCHIDACEAE
MH21	- PALMAE
MH104	- PAPAVERACEAE
MH203	- PASSIFLORACEAE
MH35	- PHILYDRACEAE
MH6	- PINACEAE
MH77	- POLYGONACEAE
MH237	- PRIMULACEAE
MH66	- PROTEACEAE
MH126.3	- PRUNUS
MH126.4	- PYRUS
MH62.3	- QUERCUS
MH91	- RANUNCULACEAE
MH233.3	- RHODODENDRON
MH126.5	- ROSA
MH126	- ROSACEAE
MH56	- SALICACEAE
MH56.2	- SALIX
MH117	- SAXIFRAGACEAE
MH257	- SCROPHULARIACEAE

MH186	- TERNSTROEMACEAE
MH186.2	- THEA
MH186	- THEACEAE
MH63	- ULMACEAE
MH273	- VALERIANACEAE
MH253	- VERBENACEAE
MH170.2	- VITICULTURE

MONOGRAPHS (NUMERICAL INDEX)

MH 6	- PINACEAE
MH 19	- GRAMINEAE
MH 21	- PALMACEAE
MH 23	- ARACEAE
MH 32	- BROMELICACEAE
MH 35	- PHILYDRACEAE
MH 38	- LILIACEAE
MH 40	- AMARYLLIDACEAE
MH 44	- IRIDACEAE
MH 50	- ORCHIDACEAE
MH 56	- SALICEAE
MH 60	- JUGLANDACEAE
MH 61	- BETULACEAE
MH 62	- FAGACEAE
MH 63	- ULMACEAE
MH 66	- PROTEACEAE
MH 67	- LORANTHACEAE
MH 77	- POLYGONACEAE
MH 84	- AIZOACEAE
MH 91	- RANUNCULACEAE
MH 93	- BERBERIDACEAE
MH 95	- MAGNOLIACEAE
MH 102	- LAURACEAE
MH 104	- PAPAVERACEAE
MH 107	- CAPPARIDACEAE
MH 115	- CRASSULACEAE
MH 117	- SAXIFRAGACEAE
MH 123	- HAMAMELIDACEAE
MH 126	- ROSACEAE
MH 127	- CONNARACEAE
MH 128	- LUGUMINOSAE
MH 137	- RUTACEAE
MH 140	- MELIACEAE
MH 147	- EUPHORBIACEAE
MH 149	- BUXACEAE
MH 157	- AQUIFOLIACEAE
MH 167	- ACERACEAE
MH 170	- VITACEAE
MH 175	- MALVACEAE
MH 186	- THEACEAE

MH 202	- MALESHERBIACEAE
MH 203	- PASSIFLORACEAE
MH 208	- BEGONIACEAE
MH 210	- CACTACEAE
MH 216	- LYTHRACEAE
MH 222	- MYRTACEAE
MH 224	- OENOTHERACEAE
MH 227	- ARALIACEAE
MH 233	- ERICACEAE
MH 237	- PRIMULACEAE
MH 243	- OLEACEAE
MH 246	- GENTIANACEAE
MH 248	- ASCLEPIADACEAE
MH 252	- BROAGNACEAE
MH 253	- VERBENACEAE
MH 254	- LABIATAE
MH 257	- SCROPHULARIACEAE
MH 258	- BIGNONIACEAE
MH 262	- GESNERIACEAE
MH 266	- ACANTHACEAE
MH 270	- RUBIACEAE
MH 275	- CUCURBITACEAE
MH 276	- CAMPANILLACEAE
MH 280	- COMPOSITAE

SUBJECT INDEX

S	AGRICULTURE
E	ANATOMY (Plant)
C	ARBORETA
Q	ARBORICULTURE
Tnlk	BARK
Rl	BERRIES
Bf	PLANTS IN LITERATURE
A	BIOGRAPHY
Rn	BONSAI
C	BOTANIC GARDENS
Cg	- Africa
Cf	- Asia
Ch	- Atlantic Ocean Islands
Cea	- Austria
Ceb	- Balkans
Cec	- Belgium
Ced	- British Isles
Cab	- Canada
Cc	- Central America
Ce	- Europe
Cef	- France
Ceg	- Germany
Ceh	- Iberian Peninsula
Cl	- Indian Ocean Islands
Cei	- Italy
Cf	- Japan
Cec	- Luxembourg
Cc	- Mexico
Cen	- Netherlands
Cep	- Poland
Ceh	- Portugal
Cer	- Russia
Ces	- Scandinavia
Cd	- South America
Ceh	- Spain
Cet	- Switzerland
Cac	- United States
Cer	- Russia
Cb	- West Indies

Ba	BOTANICAL ILLUSTRATION
B	BOTANY
Rw	BULBS
Rg	CATALOGS (Nursery)
Ro	CLIMBERS
Rs	CONGRESSES
Tk	CONSERVATION, FOREST
Tf	CONSTRUCTION OF ROADS
N	CRYPTOGRAMS
F	CYTOLOGY
Q	DENDROLOGY
Q60	- Africa
Q50	- Asia
Q90	- Australasia
Q71	- Canada
Q40	- Europe
Q70	- North America
Q80	- South America
Q73	- United States
HortDict	DICTIONARIES
J	DISEASES
Rj	DUNES
Bi	ECOLOGY
O	ECONOMIC BOTANY
Ra	ENCYCLOPEDIAS
Tf	ENGINEERING, FOREST
Bi	ENVIRONMENT
Rm	ESPALIER
Tm	EXPLORATION LUMBER (<i>see also</i> Travel and Exploration)
Tac	EXPOSITIONS
H	EVOLUTION
S	FERTILIZERS
Tkp	FIRE
Rv	FOLIAGE PLANTS
Tk	FOREST CONSERVATION
Td	FOREST EDUCATION
Tda	FOREST EDUCATION (Miscellaneous)
Tf	FOREST ENGINEERING
Tkp	FOREST FIRE
To	FOREST HISTORY
Tc	FOREST INFLUENCES

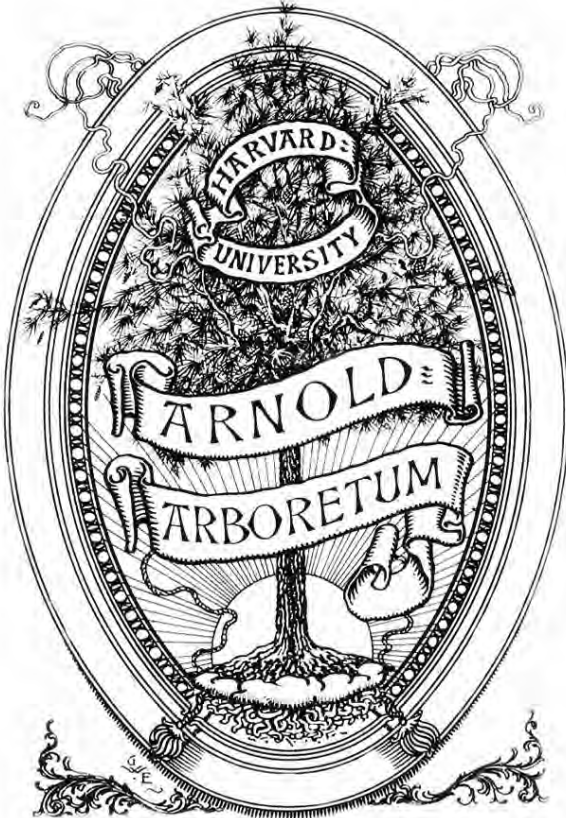
Tj	FOREST LAWS
To	FOREST LEGENDS
Te	FOREST MANAGEMENT
Ti	FOREST POLICY
Tn	FOREST PRODUCTS
Tnf	- Africa
Tne	- Australia
Tng	- Great Britain
Tnc	- South America
Tnac	- United States
Tk	FOREST PROTECTION (General)
Tka-Tkl	FOREST PROTECTION (<i>by country</i>)
Tg	FOREST TAXATION
Tg	FOREST VALUATION
T	FORESTRY (General)
Tbf	- Africa
Tbe	- Asia
Tbg	- Australia
Tbda	- Austria
Tbdb	- Balkan Peninsula
Tbdc	- Belgium
Tbdd	- British Isles
Tbab	- Canada
Tbb	- Central America
Tbe	- China
Tbd	- Europe
Tbdf	- France
Tbdg	- Germany
Tbda	- Hungary
Tbe	- India
Tbe	- Indochina
Tbdi	- Italy
Tbe	- Japan
Tbdc	- Luxembourg
Tbe	- Malaysia
Tbb	- Mexico
Tbak	- Netherlands
Tba	- North America
Tbdh	- Portugal
Tbdl	- Russia
Tbdm	- Scandinavia
Tbc	- South America

Tbdh	- Spain
Tbe	- Turkey (Asiatic)
Tbac	- United States
Tbb	- West Indies
Taa	FORESTRY DICTIONARIES, ENCYCLOPEDIAS, BIBLIOGRAPHIES, BIOGRAPHIES
Tab	FORESTRY TEXTBOOKS
Ry	FRAGRANCE
C	GARDENS (<i>see also</i> Rock Gardens / Wild Gardens)
F	GENETICS
Rh	GRAFTING
Rp	GROUND COVERS
Tnlg	GUMS
Rk	HEDGES
D	HERBARIA
Ry	HERBS
Rg	HISTORIC NURSERY CATALOGS
Bd	HISTORY: BOTANICAL / HORTICULTURAL (<i>see also</i> Forest History, Legends)
Ry	HONEY PLANTS
Rs	HORTICULTURAL CONGRESSES
HortDict	HORTICULTURAL DICTIONARIES
Ra	HORTICULTURAL ENCYCLOPEDIAS
Rs	HORTICULTURAL SOCIETIES
R	HORTICULTURE
Rb	HORTICULTURE (General)
Rc	HORTICULTURE
Ba	ILLUSTRATION
J	INSECTS
Rp	LAWNS
To	LEGENDS, FOREST
Tm	LUMBER TRANSPORTATION
Tm	LUMBERING
AO	MANAGEMENT GUIDES / RESOURCES, NOT-FOR-PROFIT
W	MAPS
P	MEDICAL BOTANY
Th	MENSURATION
Rn	MINIATURE PLANTS
E	MORPHOLOGY
D	MUSEUMS

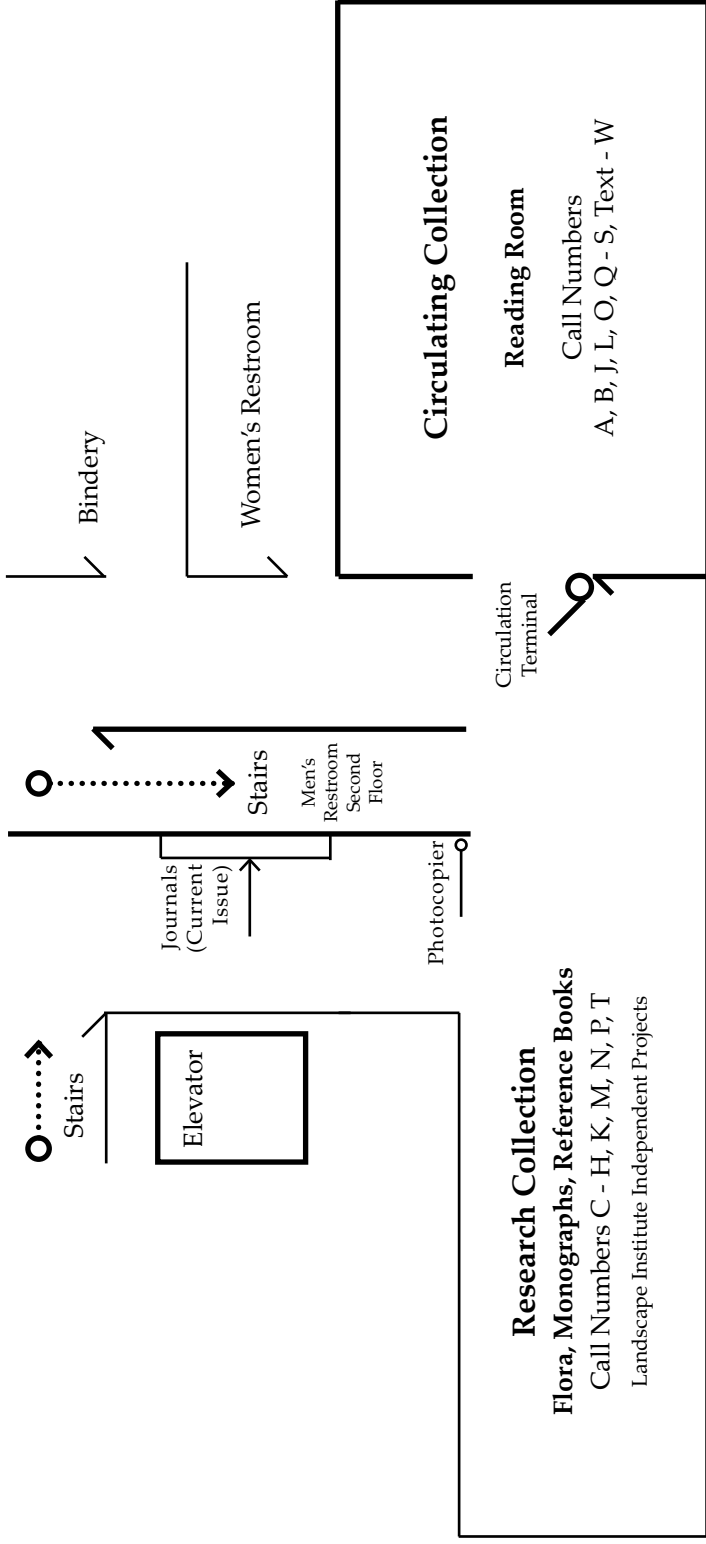
U	NATURAL HISTORY
Kd	NOMENCLATURE
Rd	NURSERY
Rg	HISTORIC NURSERY CATALOGS
Rl	NUTS
Be	PALEOBOTANY
J	PATHOLOGY
Rr	PERENNIALS
J	PESTICIDES
G	PHYSIOLOGY
F	PLANT BREEDING
Rv	PLANTERS
P	POISONOUS PLANTS
Rl	POMOLOGY
Rh	PROPAGATION
Rm	PRUNING
O	RECIPES
Ke	REGISTRATION LISTS
Tk	RESERVATIONS
Tnlg	RESINS
Tf	ROAD CONSTRUCTION
Rt	ROCK GARDENS
Rk	SCREENS
Rj	SEASIDE PLANTINGS
Ri	SHADE TREES
Tl	SILVICULTURE (General)
Tlf	- Africa
Tlaa	- Alaska
Tle	- Asia
Tlg	- Australia
Tlda	- Austria
Tldc	- Belgium
Tldd	- British Isles
Tlab	- Canada
Tlb	- Central America
Tle	- China
Tld	- Europe
Tldf	- France
Tldg	- Germany
Tlda	- Hungary
Tle	- India
Tll	- Indian Ocean Islands

Tle	- Indochina
Tldi	- Italy
Tle	- Japan
Tldc	- Luxembourg
Tle	- Malaysia
Tldj	- Mediterranean Islands
Tlb	- Mexico
Tldk	- Netherlands
Tla	- North America
Tll	- Pacific Ocean Islands
Tldh	- Portugal
Tldl	- Russia
Tldw	- Scandinavia
Tlc	- South America
Tldh	- Spain
Tlon	- Switzerland
Tle	- Turkey (Asiatic)
Tlac	- United States
Tlb	- West Indies
Rs	SOCIETIES
S	SOILS
Ri	STREET TREES
Ru	SUCCULENT PLANTS
Tf	SURVEYING
Tg	TAXATION
Kd	TAXONOMY
Tni	TESTING OF TIMBER
Text	TEXTBOOKS (General)
Tn	TIMBER TRADE
Tm	TRANSPORTATION (Lumber)
V	TRAVEL and EXPLORATION (General)
Vf	- Africa
Ve	- Asia
Va	- Australia
Vb	- Central America
Vd	- Europe
Vi	- Islands
Vb	- Mexico
Va	- North America
Vc	- South America
Vac	- West Indies

Ri	TREES
Rf	TREE CARE
Rf	TREE MAINTENANCE
Tnk	USES OF WOOD
Tg	VALUATION
Ro	VINES
MH170.2	VITICULTURE
W	WEATHER
W	WEATHER MAPS
J	WEED CONTROL
Flb	WEEDS
Rt	WILD GARDENS
Fla	WILDFLOWERS
Rk	WINDBREAKS



Archives, Journals, Oversize, Folios





Phone: 617.522.1086
 Fax: 617.524.1418, ATTN: Library
 Email: hortlib@arnarb.harvard.edu
<http://arboretum.harvard.edu/>

"Magnolia virginiana" Mark Catesby. The Arnold Arboretum of Harvard University