



## Seasonal Tree Study

**Take a deep dive into any one of the Arnold Arboretum's fascinating trees!**

The Arnold Arboretum is a museum of trees with specimens from around the world that reveal their secrets in any season. Plan to have students each choose one tree to “interview” and get to know personally. Specially marked trees have a QR code that further illustrates significant features or history, and is easily accessed with a phone.

*Print copies of the double-sided worksheet for children to use during their visit.*

### Free Exploration

- Walk along Meadow Road investigating trees. Use one to model how to look closely at tree features like bark, leaves, flowers, fruit or seedpods, and to step back and look at the overall size and shape of the tree.
- Encourage student sensory exploration to get to know the tree as a friend.
- Find a tree ID tag and discover the information it contains.

### Guided Exploration

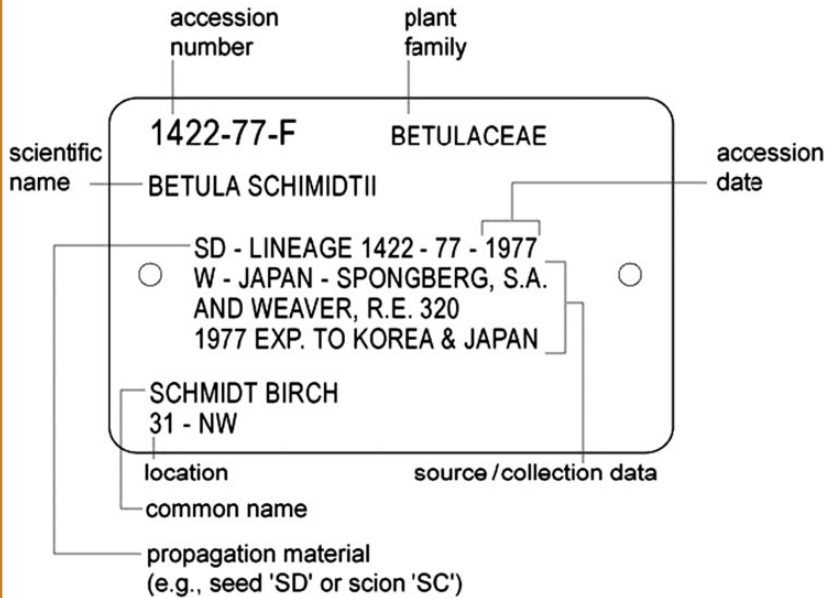
- Students each choose one tree to study. Use the printed worksheet and these prompts to help students write about their observations and make detailed drawings.
  - Make a list of all the living things you find in and near your tree.
  - Describe what you hear and smell around you.
  - Touch the bark and focus on its patterns, colors and textures.
  - Does your tree have any fruit? Think about how the seeds inside might disperse.
  - Look closely at a leaf, both top and underside: notice shape, margins, and vein patterns.  
Do you see hairs, evidence of animal damage, or other traits?
- Look for the Tree ID tag and record important information.

### Concluding Activities

- Students take turns introducing their new friend to the group by pretending to be that tree and showing off its best features. The more dramatic and playful, the better!
- Play Who Am I? guessing game. Lay all drawings so students can see and then describe one feature of a tree for students to guess. For example, “My leaf is dark green, and heart shaped with prickly edges.”



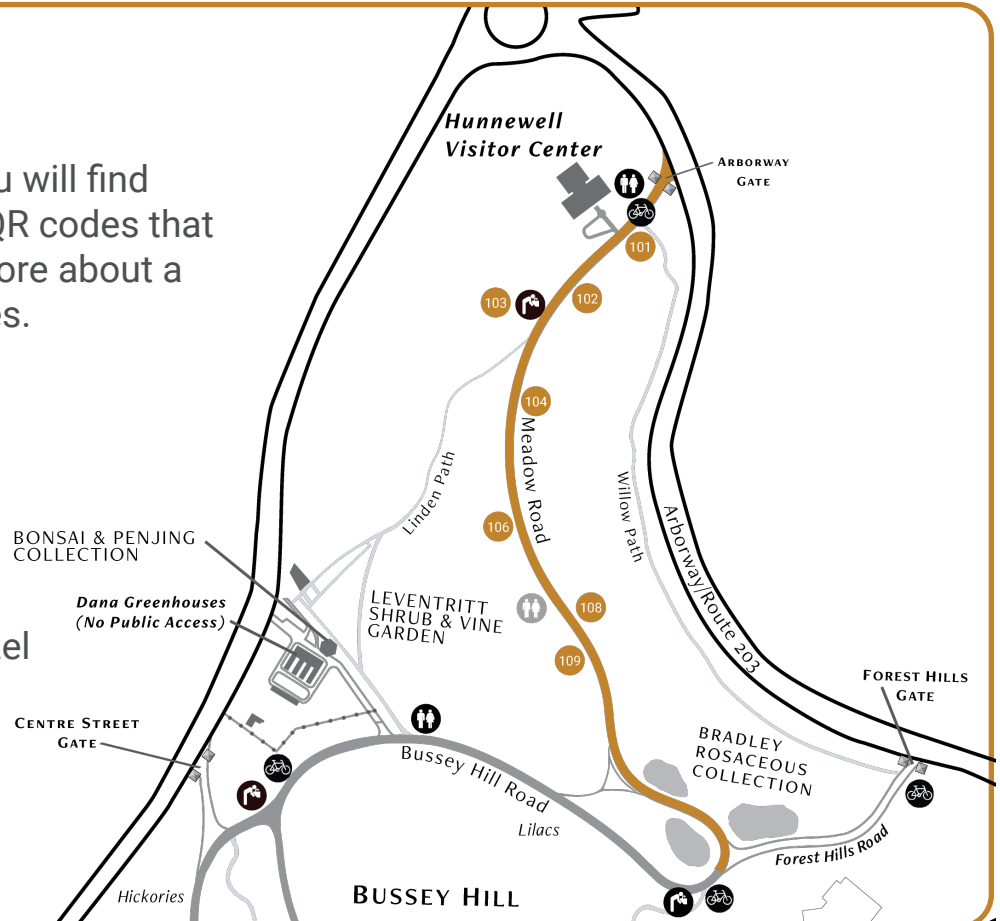
**Arnold Arboretum Plant Label (Tree ID Tag).** Found on all accessioned plants, look for a credit card-sized metal tag affixed to the plant with wire.



## Meadow Road

Along Meadow Road you will find Expeditions signs with QR codes that you can scan to learn more about a selection of notable trees.

- 101 Red Maple
- 102 Dawn Redwood
- 103 Hybrid Tulip Tree
- 104 Katsura
- 106 Amur Cork Tree
- 108 Japanese Maple
- 109 Chinese Witch-hazel







Season: \_\_\_\_\_ Date: \_\_\_\_\_ Weather: \_\_\_\_\_

Kind of Tree: \_\_\_\_\_

Draw your tree.	Sketch a leaf.
	Sketch a flower or fruit.
	Make a bark rubbing.