

Banksy

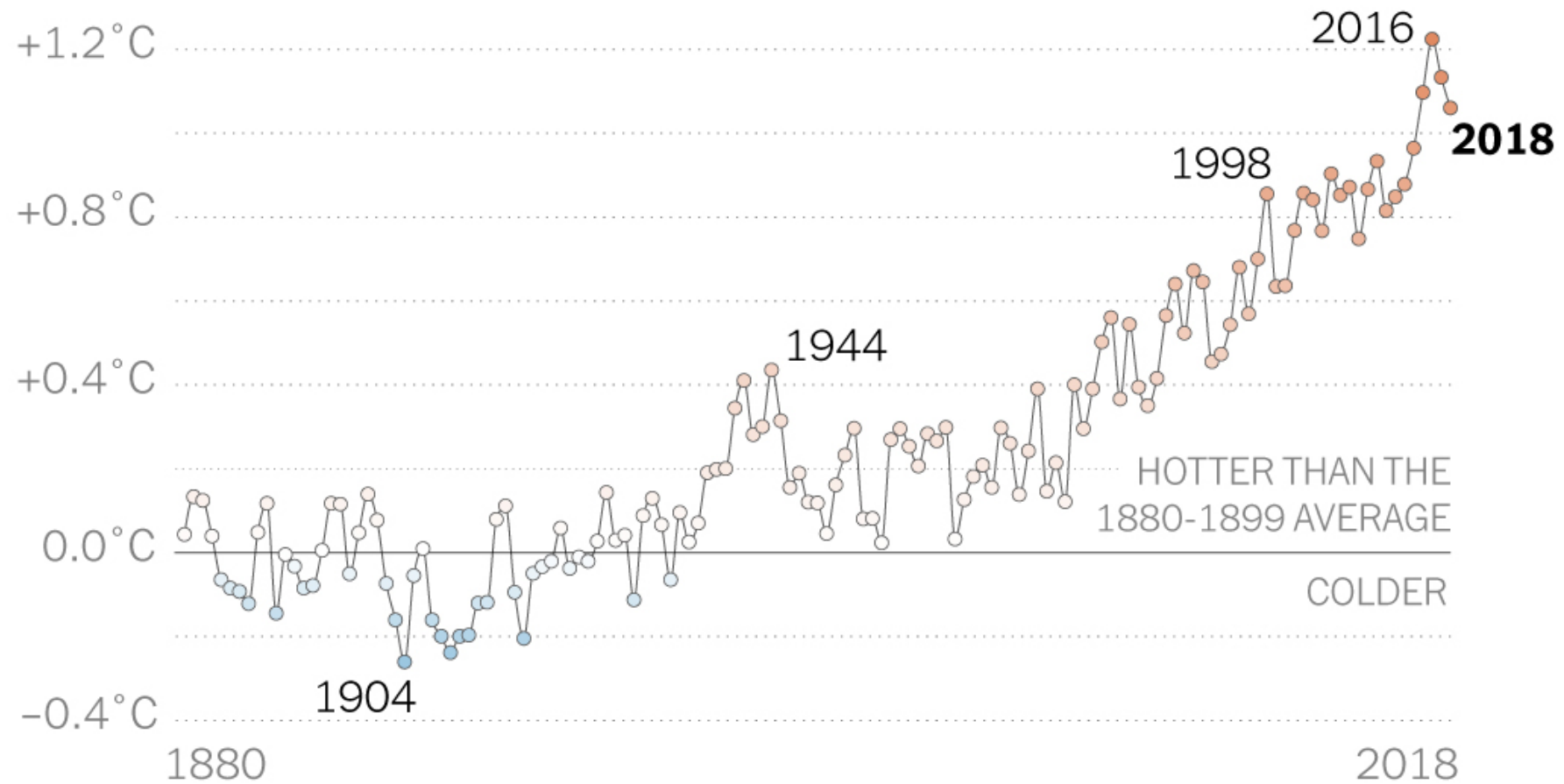


Banksy

The Power of Street Art



What's
Going On In
This Graph?
(WGOITG)



- **What do you notice?**
- **What do you wonder?**
 - What story is this telling?
 - What title would you give it?

Is this data accurate? Do we believe this information is true?

Is this data meaningful? Do we believe this information is important?

What choices did the person who created this graphic make? Why did they make those choices?

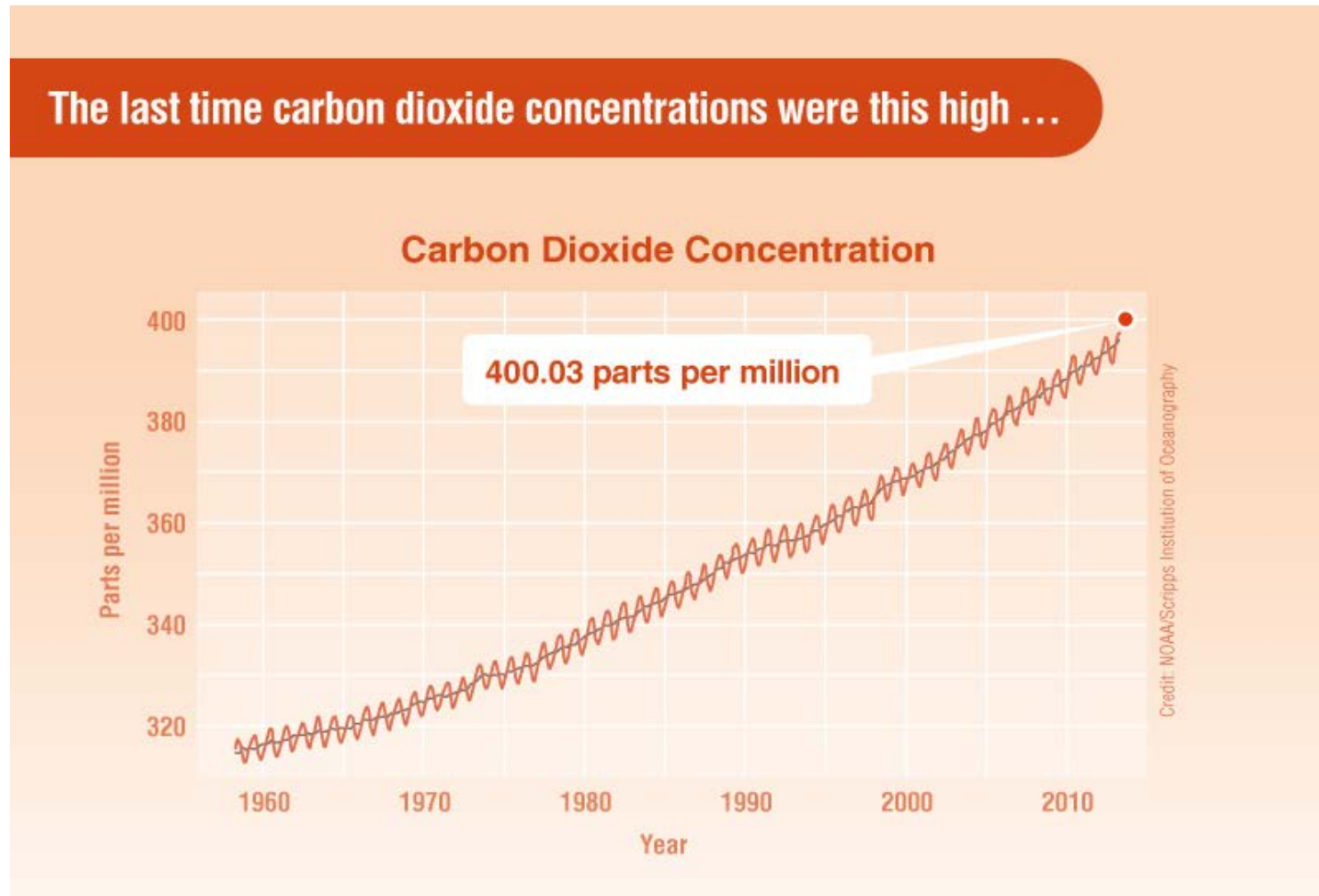


Blu

What's Going On In This Graph?

(WGOITG)

- **What do you notice?**
- **What do you wonder?**
 - What story is this telling?
 - What title would you give it?
- **Is this data accurate?** Do we believe this information is true?
- **Is this data meaningful?** Do we believe this information is important?
- **What choices did the person who created this graphic make?** Why did they make those choices?

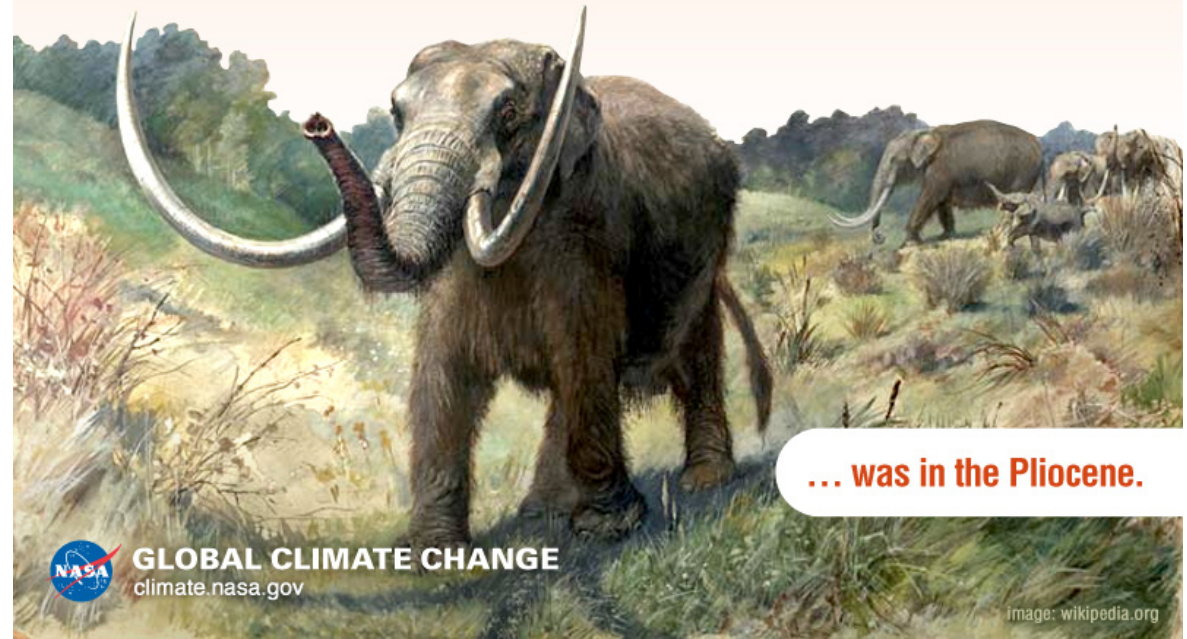
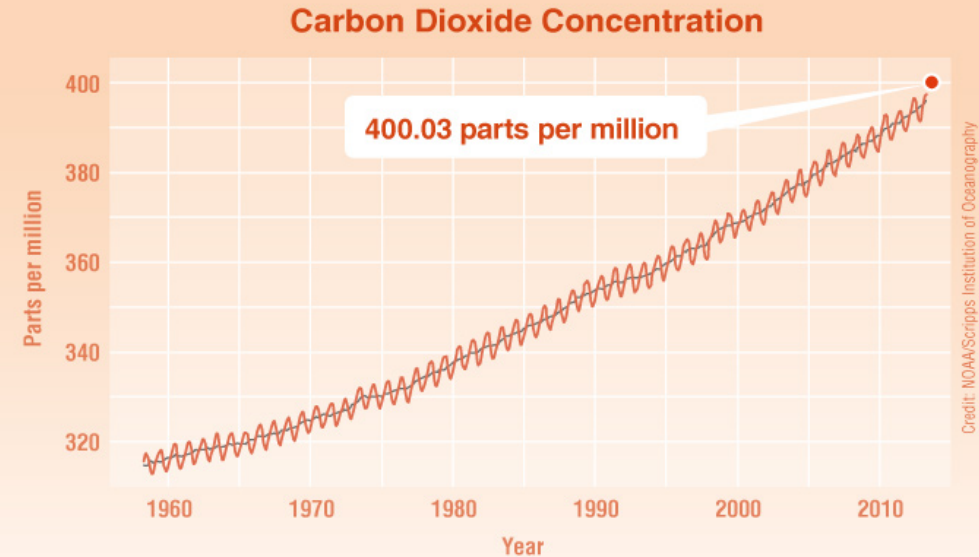


What's Going On In This Graph?

(WGOITG)

- **What do you notice?**
- **What do you wonder?**
 - What story is this telling?
 - What title would you give it?
- **Is this data accurate?** Do we believe this information is true?
- **Is this data meaningful?** Do we believe this information is important?
- **What choices did the person who created this graphic make?** Why did they make those choices?

The last time carbon dioxide concentrations were this high ...



... was in the Pliocene.



GLOBAL CLIMATE CHANGE
climate.nasa.gov

Image: wikipedia.org



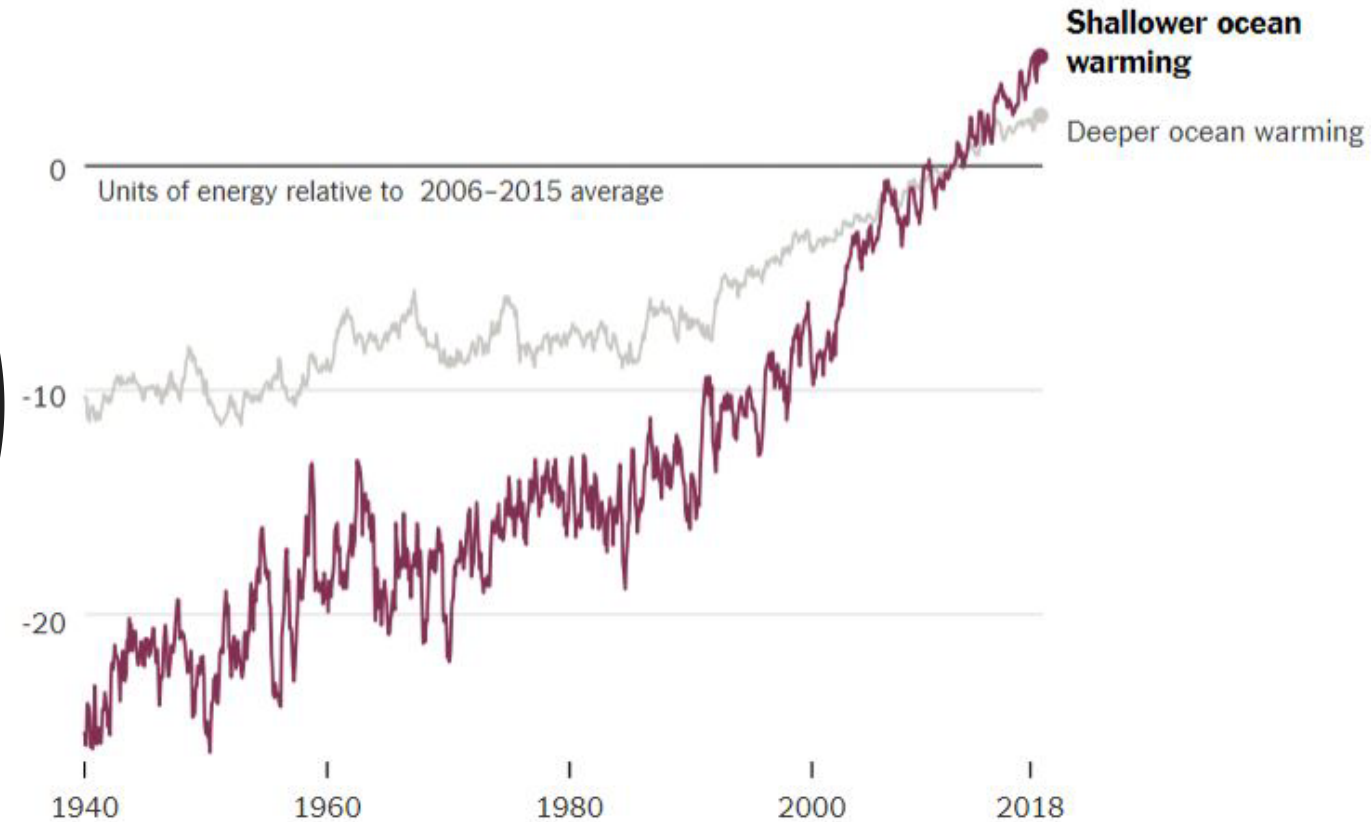
AIR POLLUTION KILLS **60,000** PEOPLE A YEAR

 NRDC.org

NRDC image

What's Going On In This Graph? (WGOITG)

Data since the 1940s shows that the heat content of the oceans has been increasing. Waters closest to the surface have warmed significantly over the past two decades.



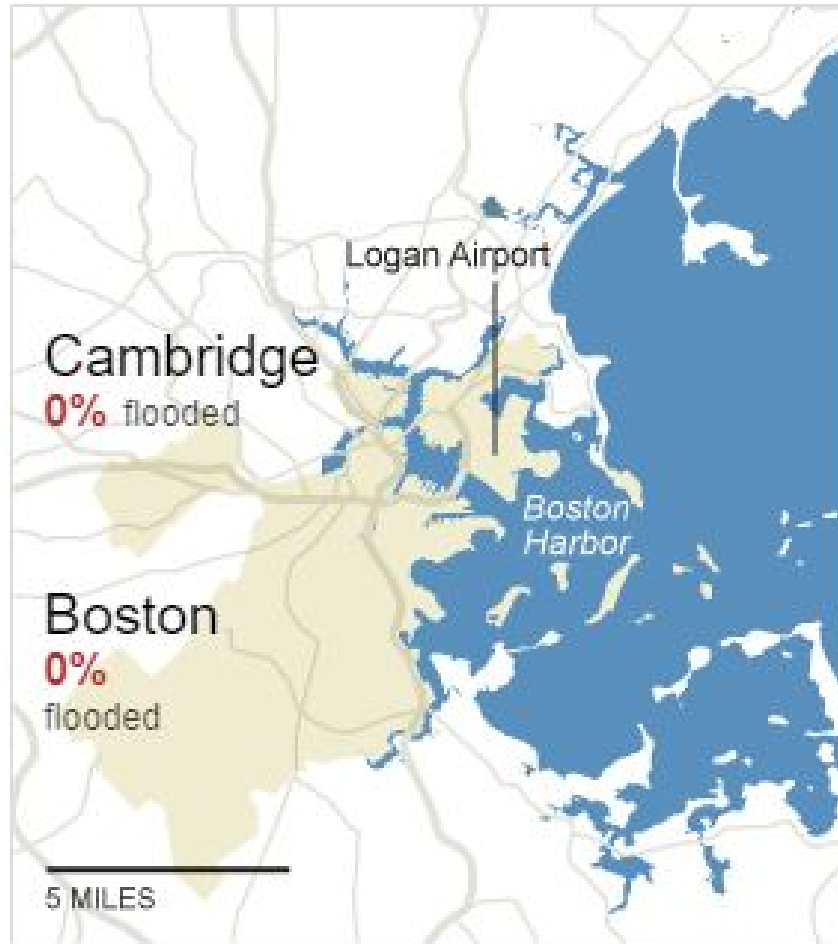
Note: Shallower ocean warming describes depths between 0 and 700 meters. Deeper ocean warming is between 700 and 2,000 meters.
By The New York Times |
Source: Lijing Cheng et al.,
Institute of Atmospheric Physics,
Beijing

- What do you notice?
- What do you wonder?

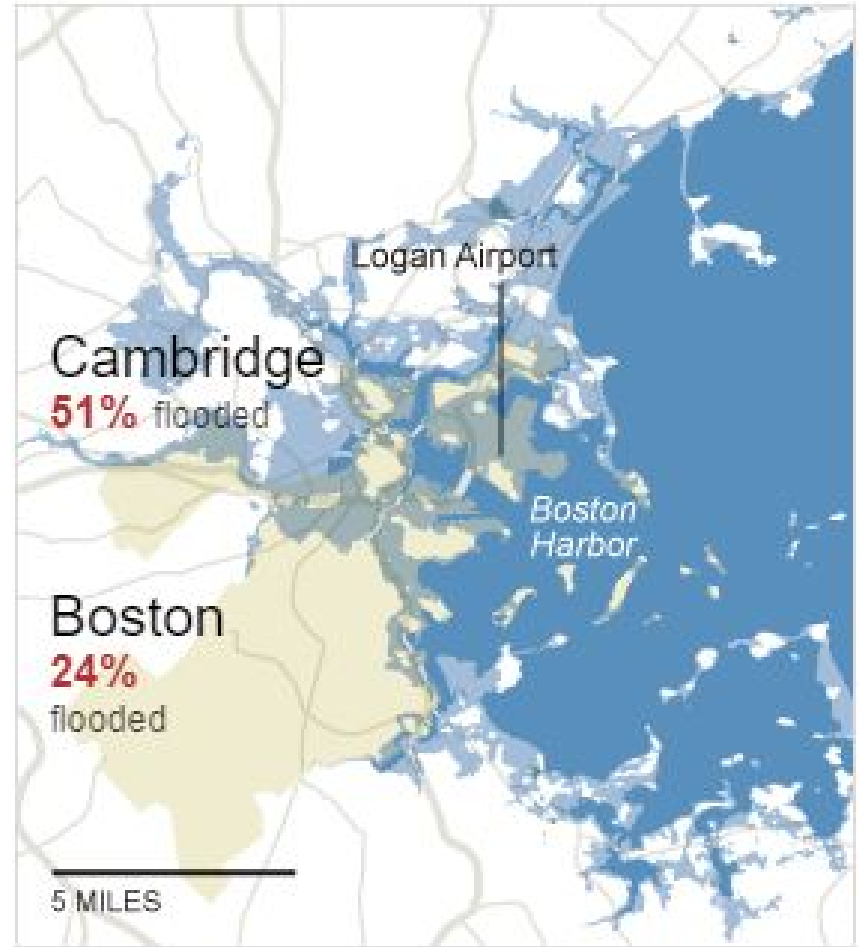


What's
Going On In
This Graph?
(WGOITG)

Boston 0 feet sea level rise



Boston 12 feet sea level rise



Back Bay, the South End and the airport are permanently submerged. What's left of downtown is an island.

[What could disappear?](#)



Banksy



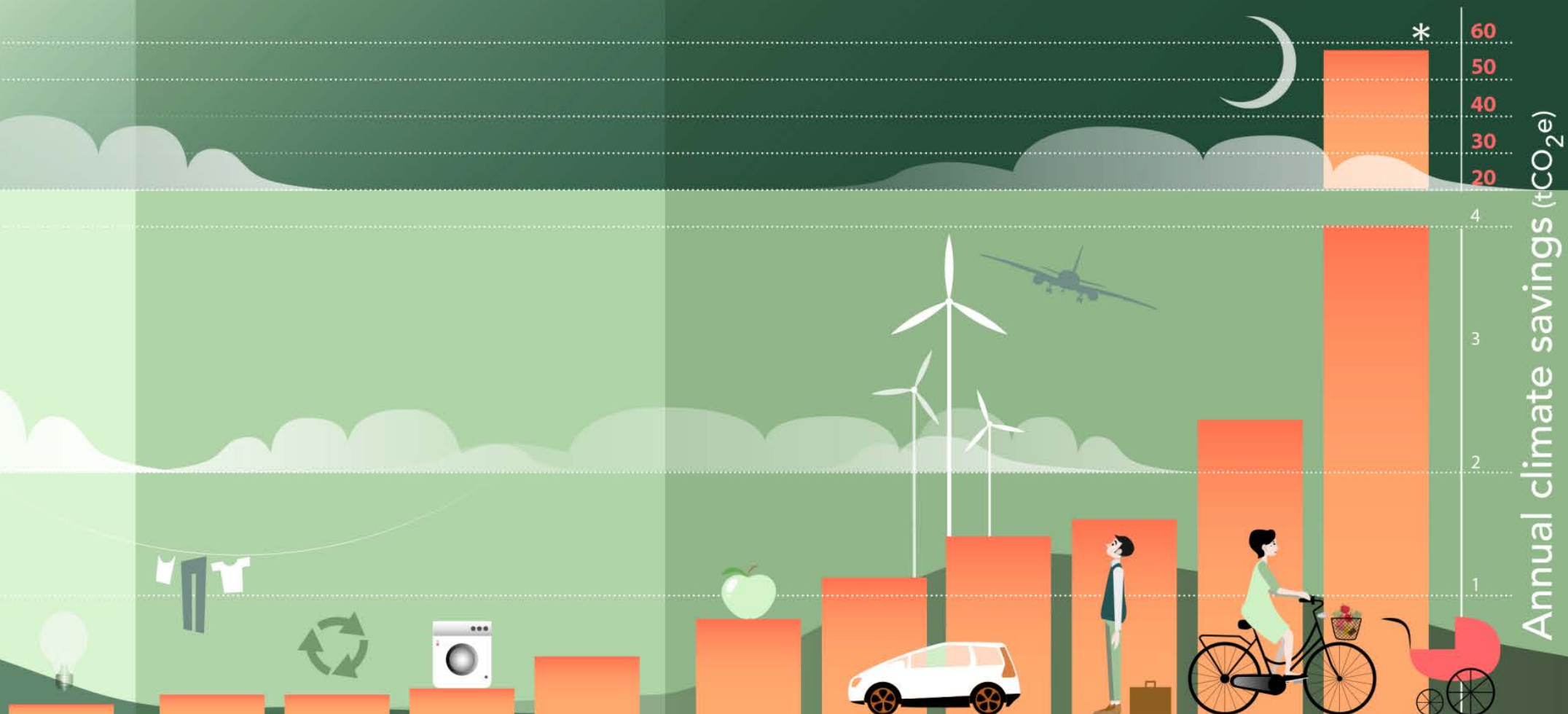
Sean Yoro aka Hula

The Power of Street Art

Personal choices to reduce your contribution to climate change

* Cumulative emissions from descendants; decreases substantially if national emissions decrease.

Average values for developed countries, based on current emissions.



Low Impact

< 0.2 tCO₂e

Moderate Impact

0.8-0.2 tCO₂e

High Impact

> 0.8 tCO₂e



Rak