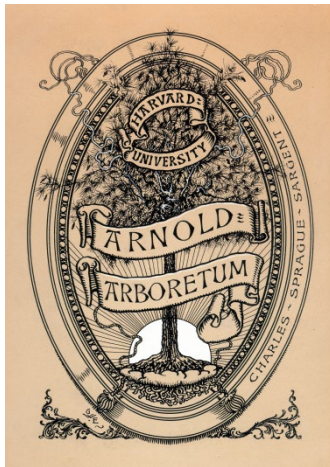


Archives II A-16

Richard Warren (1907-1999) papers, 1975-1986: Guide.



The Arnold Arboretum of Harvard University

© 2024 President and Fellows of Harvard College

II A-16

Richard Warren (1907-1999) papers, 1975-1986: Guide Archives of the Arnold Arboretum of Harvard University 125 Arborway, Jamaica Plain, Massachusetts

© 2024 President and Fellows of Harvard College

Descriptive Summary

Repository: Arnold Arboretum, Jamaica Plain, MA 02130

Call No.: II A-16

Location: Archives

Title: Richard Warren (1907-1999) papers, 1975-1986.

Date(s): 1975-1986

Creator: Richard Warren, 1907-1999

Quantity: 16 linear inches. 4 boxes

Language of material: English

Abstract: Dr. Richard Warren (1907-1999) Professor of Surgery, Emeritus, Harvard Medical School was born and raised in the Boston area and became another distinguished Warren in a line of great academic minds. One of Dr. Warren's great passions was the study of conifers, and in his retirement from medicine he studied conifers at the Arnold Arboretum. This collection covers Dr. Warren's study of coniferous trees in the latter part of the 20th century.

Note: Access to Finding Aid record in [HOLLIS](#).

Preferred Citation: Richard Warren papers. Archives of the Arnold Arboretum of Harvard University.

Additional Material: For Richard Warren's professional archives see Countway Medicine [Richard Warren Papers](#), 1930s-1970s, which contains administrative files, African trip diaries, and staff photographs documenting Warren's activities at Peter Bent Brigham Hospital and Harvard Medical School. For his medical publications see Countway Medicine RareBooks 1.Mw.1954.W.

Processing Information

October 2007; Kayleigh Hinckley 2011; Liz Francis and Sheila Connor 2012; Larissa Glasser 2023, 2024.

Acquisition Information

Provenance: These papers were created by Richard Warren and were acquired after Richard Warren's career at the Arboretum ended.

Terms of Access

Researchers seeking to examine archival materials are strongly encouraged to make an appointment. The Director, or an office of origin, may place restrictions on the use of some or all of its records. The extent and length of the restriction will be determined by the Director, office of origin, and the Archivist.

Terms of Use

The copyright is held by The President and Fellows of Harvard College for the Arnold Arboretum Archives of Harvard University. The copyright on some materials in the collection may be held by the original author or the author's heirs or assigns. Researchers are responsible for obtaining written permission from the holder(s) of copyright and the Arnold Arboretum Archives prior to publishing any quotations or images from materials in this collection.

Photocopies may be made at the discretion of the Arnold Arboretum Archives staff. Permission to make photocopies does not constitute permission to reproduce or publish materials outside the bounds of the fair use guidelines.

Biographical Note



Richard Warren and Alfred Fordham at the Case Estates 1989

Dr. Richard Warren (1907-1999) Professor of Surgery, Emeritus, Harvard Medical School was born and raised in the Boston area and became another distinguished Warren in a line of great academic minds. His father, Joseph Warren, was a professor at the Harvard Law School, and his predecessors include John Warren, first Professor of Anatomy and Surgery at Harvard Medical School. In 1925 Dr. Warren graduated from Milton Academy and in 1929 from Harvard College. After an additional year of study at Trinity College in Cambridge, Dr. Warren enrolled at Harvard Medical School. He graduated in 1934, completed his internship and residency, and embarked upon a distinguished career in surgery and teaching in Boston. During his career as a surgeon, Dr. Warren also volunteered to assist the Countway Library of Medicine at Harvard Medical School. There, he cataloged, arranged, and updated the Warren Family Collection, which consisted of many rare

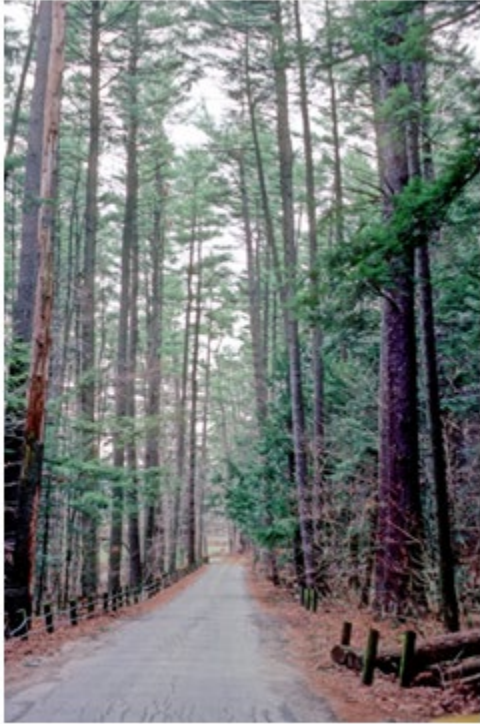
medical books collected by his ancestors.

One of Dr. Warren's great passions was the study of conifers, and in his retirement from medicine he studied conifers at the Arnold Arboretum. Appointed as the "voluntary curator of the coniferous collection" by Richard A. Howard, the Arboretum's director, Dr. Warren worked not only on conifers, but also volunteered in the library. In 1981, the Arboretum mounted the exhibit "Conifers" based on Dr. Warren's work with the living collection and, in 1983, his research on conifers became part of the Arboretum's National Science Foundation Project. Peter S. Ashton, Howard's successor, appointed Dr. Warren an Associate of the Arboretum in 1982 a position he held until 1987.

Dr. Warren authored, or co-authored, several articles on conifers that were published in *Arnoldia*: "[Propagation Manual of Selected Gymnosperms](#)" with Alfred J. Fordham, Leslie J. Spraker. 37 (1) 1977; [The Fire Pines](#) with Alfred J. Fordham 38 (1) 1978; [Spruces in the Arnold Arboretum](#) 42 (3) 1982; and [A Guide to the Firs](#) (*Abies* spp.) with Ethan W. Johnson. 48 (1) 1988.



Richard Warren's Conifer Class, Arnold Arboretum. 1983.



Cathedral Pines, Cornwall, Connecticut, photograph by Richard Warren, 4/12/1980 evidenced by his slide collection.

Cora Warren, Dr. Warren's first wife, joined him in his passion for horticulture and volunteered for many years in the Arboretum's library in Jamaica Plain. As a tribute to her many years of Arboretum involvement, Richard Warren underwrote the cost of a new entryway for the Hunnewell Building as a plaque in the lobby indicates: "These doors are donated in memory of Cora Lyman Warren, 1910-1983. Dedicated Volunteer."

Inspired by his work at the Arboretum, Dr. Warren planted and curated a Pinetum at his residence, 200 Highland Street in Dedham, MA. And his research was not limited to only local conifer collections. During 1979, Dr. Warren kept field notes from a trip to West Sussex, England to visit Borde Hill Garden, the site of Gores Wood and Warren Wood and the of home of Stephenson Robert Clarke a patron of many great plant explorers who collected plants from the Himalayas, China, Tasmania, the Andes and North America between 1900 and 1930. Dr. Warren's notes state: "in the four visits I saw every conifer planted in GW & WW, 411 plants." The following year Dr. Warren went on a research trip to New Caledonia, and his research took him on numerous other trips as

In 1987, Dr. Warren stepped down from his position at the Arboretum, leaving a wealth of knowledge for future researchers. In 2000, his family established the "Richard Warren Expeditionary Fund at the Arnold Arboretum of Harvard University."

"The Richard Warren Expeditionary Fund is designated for the propagation of plants from sites of wild origin, appropriate for the living collections of the Arnold Arboretum. It will support associated scientific research on woody plants in temperate parts of the world and will fund expeditions from any appropriate person or institution worldwide, particularly for the collection of seed and propagation of plants."

Income from the Warren Expeditionary Fund supports the collecting efforts of the Arnold Arboretum's staff and has helped underwrite continued exploration of China.

Scope and Content

This collection covers Dr. Warren's study of coniferous trees in the latter part of the 20th century. Included are his general notes on the Arboretum's conifer collection, indexes of his own Pinetum, and field notes on trips to Gore's Wood, Warren Wood, and New Caledonia. His slide collection (1977-1986) consists mainly of images of conifers taken at the Arnold Arboretum. There are also slides of his Pinetum at 200 Highland Street, and at other locations both in the United States and abroad.

Arrangement

The collection is arranged in 8 series:

- Series I:** Biographical records
- Series II:** Richard Warren Expeditionary Fund
- Series III:** Correspondence
- Series IV:** Conifer Index
- Series V:** Research Notes
- Series VI:** Arnold Arboretum Planting Maps
- Series VII:** Pinetum
- Series VIII:** Slides



Metasequoia, Richard Warren Pinetum, 10/30/1982

Container List

Box 1

Series I: Biographical Records

Folder

- 1:** Photographs, appointment forms from Harvard University, appointing Dr. Warren "To voluntarily curate the conifer collection at the Arnold Arboretum," 1984-1986, correspondence with Peter Ashton, director of the Arnold Arboretum, regarding appointments and eventual "retirement," obituaries and memorials. Also included is an invitation to the "Dedication of new entrance doors in memory of Cora Lyman Warren, " two images of Cora Warren leading a tour at the Arboreum, undated, and an obituary.



Series II: Richard Warren Expeditionary Fund

Folder

- 2:** Correspondence with the Warren family, Janet Warren Buell Rogers (daughter), Kathleen Warren (second wife), lists of donors to the Expeditionary Fund, and letters of acknowledgement of contributions to the fund to various donors.

Series III: Correspondence

Folder

3:

- Letter from Humphrey J. Welch, Pine Cottage Arboretum, Dorset, England. 8/31/1982.
- Letter to Mr. Weld. 11/2/1982.
- Letter from Humphrey J. Welch, Pine Cottage Arboretum, Dorset England. 11/14/1982.

Series IV: Research Notes

- 4:** Trees in Pinetum, 200 Highland St.
- 5:** Notes on Genus Abies
- 6:** Notebook from Gores Wood, Warren Wood
- 7:** Record Book, New Zealand, 1980.

8: New Caledonia Correspondence

- From Richard to Service des Eaux et Forets, Noumea, New Caledonia 1/19/1980.
- to Centre Technique Forestier Tropical, Nogent-sur-Marne France. 1/19/1980.
- from Harold E. Moore, Jr. 1/30/1980.
- to Harold E. Moore, Jr. 2/2/1980.
- from Harold E. Moore, Jr. 2/12/1980.
- from J. Douheret, Le Chef du Services des Eaux et Forets. 2/13/1980.
- to M. Veillon, New Caledonia. 2/17/1980.
- Note from Harold E. Moore, Jr. 2/28/1980.
- to M. Veillon, New Caledonia. 3/24/1980.
- Notes about contacts in New Caledonia

9: New Caledonia Travel Articles

10: New Caledonia Binder, Research Notes

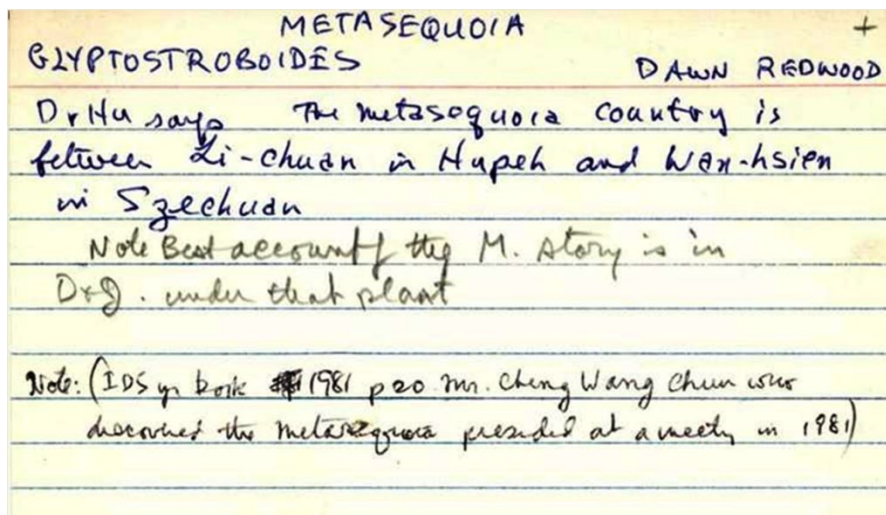
11: New Caledonia Illustrations

12: New Caledonia Map and Brochure

Box 2

Series V: Conifer Index

Consists of 1,088 index cards of notes on conifers, mainly organized alphabetically by genus.



- General Conifers, 59 index cards. Charted notes on 56 varieties of conifers, arranged alphabetically by genus; no evident key to the chart. Three index cards denote special cases: intolerant difficult sites, ornamental bark, and red flowers.
- Regional Distribution of Conifers- 24 index cards, each with a list of conifers that grow in each country or region worldwide, arranged alphabetically by country or region. Bibliographical reference interfiled. Misc. Coffin Trees (*Taiwania cryptomerioides*), 14 index cards and pages, mostly bibliographic references, no apparent arrangement.
- *Abies*, 181 index cards and pages. Majority of the cards arranged alphabetically by species and contain notes regarding buds, foliage, leaves, and cones. Green index cards (29), alphabetical by species, specific notes on characteristics. Some photocopied articles and bibliographic references interfiled

- *Acmopyle*, One index card, with minimal information
- *Actinostrobus*, One index card, with minimal information
- *Agathis*, Five index cards, arranged alphabetically by species, note general characteristics of each
- *Amentotaxus*, One index card, with minimal information
- *Araucaria*, Seven index cards, three contain general notes about the genus and four arranged alphabetically by species with general notes
- *Athrotaxis*, Two index cards containing general notes on the genus
- *Austrocedrus*, One index card, with general notes
- *Callitris*, One index card, with general notes
- *Calocedrus*, Two index cards containing general notes on the genus
- *Cathaya*, Two index cards, one with general notes on the genus and one with note about one species (*argyrophylla*)
- *Cedrus*, Seven index cards, two with general genus notes, five with specific species notes
- *Cephalotaxus*, Four index cards and pages, two with general genus notes, two with specific species notes
- *Chamaecyparis*, 12 index cards, four with general genus notes, eight with specific species notes
- *Cryptomeria*, Two index cards, both with notes about *C. japonica*
- *Cunninghamia*, Three index cards, one with general genus notes, two with specific species notes
- *Cupressocyparis*, Four index cards and one photocopied article, notes regarding two species
- *Cupressus*, 17 index cards, eight with general genus notes, nine with species notes
- *Dacrydium*, 12 index cards, one with general genus notes, 11 with species notes.
- *Diselma*, One index card with general genus notes
- *Fitzroya*, One index card with general genus notes
- *Fokienia*, One index card with notes about *F. hodginsii*
- *Ginkgo bilboa*, Three index cards
- *Glyptostrobus*, One index card with notes on *G. lineatus*
- *Juniperus*, 27 index cards and pages, 18 with general genus notes, 9 with specific species notes, arranged alphabetically by species
- *Keteleeria*, Three index cards with notes on *K. davidian*
- *Larix* I: 74 index cards. Index cards categorized: Descriptions from literature, 26 index cards arranged alphabetically by species, majority have characteristic notes on bark, blots, shoots, and cones; Descriptions of AA Plants, 47 index cards, all dated July 1982 and with each tree identified by tag number, arranged alphabetically by species; Cones in JP Cone Collection, no apparent notes for this section
- *Larix* II: Arnold Arboretum Plant Records, 50 records, photocopies of catalog records arranged alphabetically by species
- *Libocedrus*, Five index cards and pages, two with general genus notes, three with specific species notes
- *Metasequoia*, Two index cards, both with notes regarding *M. glyptostrobooides* (One seen above.)
- *Microbiota*, Three index cards, one with general genus notes, two with notes about on *M. decussate*
- *Microcachrys*, Two index cards, both with notes on *M. tetragona*
- *Microstobos*, One index card with minimal notes
- *Neocallitropsis*, One index card with minimal notes
- *Papuacedrus*, One index card with minimal notes.
- *Phyllocladus*, Four index cards, arranged alphabetically by species, each with specific species notes
- *Piceas* from A. G. Gordon, Nov. '81, Four index cards, notes on characteristics

- of four different species
- *Picea*, 125 index cards, 20 cards with general notes on genus and one photocopied article, 105 with notes on specific species, including notes and illustrations regarding trees in the Arnold Arboretum, arranged alphabetically by species
- *Picea asperata* Study, 61 index cards, notes on study done in Arnold Arboretum August-October 1979. Many cards illustrated with sketches of cone characteristics. Each card is labeled with the accession
- *Picea koyamai* Study, 17 index cards, notes on study done in Arnold Arboretum January, July 1980. Each card is labeled with the accession number
- *Pilgerodendron*, One index card with minimal notes
- *Pinus*, 230 index cards, arranged alphabetically by species, some species contain notes specific to trees in the Arnold Arboretum, 46 index cards contain notes from a study conducted in September 1984, of 46 species in the Shaw collection.
- *Platyclusus*, Two index cards with general notes on *Thuja orientalis*
- *Podocarpus*, 11 index cards, arranged alphabetically by species
- *Pseudolarix*, Two index cards with notes on *P. amabilis*
- *Pseudotsuga*, Eight index cards, two with general genus notes, six with specific species notes, arranged alphabetically by species
- *Saxegothea*, One index card with general genus notes
- *Sciadopitys*, One index card with notes on *S. verticillata*
- *Sequoia*, Two index cards with notes on *S. sempervirens*
- *Sequoiadendron*, Two index cards with notes on *S. giganteum*
- *Taiwania*, One index card with notes on *cryptomeroides*
- *Taxodiaceae*, Three index cards with general notes on the genus
- *Taxodium*, Seven index cards with notes on three species, arranged alphabetically by species.
- *Taxus*, 17 index cards, six with notes on genus, 11 with notes on specific species, arranged alphabetically by species
- *Tetraclinis*, One index card with notes and illustration on *T. articulate*
- *Thuja*, 13 index cards and one photocopied article, four with general genus notes, nine with specific species notes, arranged alphabetically by species
- *Thujopsis*, One index card with notes on *T. dolabrata*
- *Torreya*, Six index cards, two with general genus notes, four with specific species notes on four species, arranged alphabetically by species
- *Tsuga*, 18 index cards, four full pages of notes. Three index cards of general genus notes, 15 of specific species notes, arranged alphabetically by species Pages contain notes on trees in the Arnold Arboretum
- *Widdringtonia*, One index card with general genus notes

Box 3

Series VI: Arnold Arboretum Planting Maps

Set of section maps of Arnold Arboretum, annotated, 1-78. Missing numbers 9, 14, 19, 41, 45, 59, 60, 65, 66, 71, 72, 74. Also includes notes and other misc. maps.

Box 4

Series VII: Pinetum, 200 Highland St, Dedham, MA

Incomplete series on index cards. Covers #93-123, 125-127, 129-136, 139-146, 148-159, 161, 164-217



View of Richard Warren Pinetum, n.d.

**Box 5
Series VIII:**

273 slides taken between 9/1975-8/1986. The collection is primarily of coniferous trees and is arranged alphabetically by plant name, and then chronologically by date. There are also images of the Arnold Arboretum, the Pinetum, trees in the surrounding area, and slides from trips taken to California and England. Table of slides below.



Azaleas at Richard Warren Pinetum 5/13/1980

Plant Name	Date	Location	Photo of
<i>A. nord</i>	8/24/1985	Fairburn House, N. of Inverness	habitat
<i>A. nord and P. cembra</i>	8/24/1985	Fairburn House, N. of Inverness	habitat
<i>Abies alba</i>	9/1/1975	n.a.	tree
<i>Abies alba</i> (753-36-B)	3/24/1979	A. A.	foliage
<i>Abies amabilis</i> (48-55A)	3/28/1979	A.A.	foliage
<i>Abies balsamea</i>	3/23/1979	Grafton	foliage
<i>Abies balsamea</i>	3/23/1979	Grafton	tree
<i>Abies balsamea</i>	3/23/1979	Grafton	foliage
<i>Abies balsamea</i>	3/24/1979	A. A.	foliage
<i>Abies balsamea</i> and <i>Abies fraseri</i>	3/24/1979	200 Highland	needles
<i>Abies balsamea</i> and <i>Abies fraseri</i>	3/24/1979	200 Highland	needles

<i>Abies borisii-regis</i> (827-27A)	3/28/1979	A.A.	foliage
<i>Abies bracteata</i>	3/10/1979	Tanoak Trail, CA	tree
<i>Abies bracteata</i>	3/10/1979	Tanoak Trail, CA	tree
<i>Abies bracteata</i>	3/10/1979	Tanoak Trail, CA	tree
<i>Abies ceph. apollonis</i>	4/1/1979	A.A. Cone Collection	cone
<i>Abies cephalonica</i>	3/24/1979	A. A.	foliage
<i>Abies cephalonica</i>	4/1/1979	A.A. Cone Collection	cone
<i>Abies chensiensis</i>	4/1/1979	A.A. Cone Collection	cone
<i>Abies cilicica</i>	4/1/1979	A.A. Cone Collection	cone
<i>Abies cilicica</i> (614-33)	3/28/1979	A.A.	foliage
<i>Abies concolor</i>	4/1/1979	A.A. Cone Collection	cone
<i>Abies concolor</i> (12393-C)	3/28/1979	A.A.	foliage
<i>Abies erandis</i> (12409)	3/28/1979	A.A.	foliage
<i>Abies ernestii</i> (229-53)	3/24/1979	A. A.	foliage
<i>Abies fargesii</i>	4/1/1979	A.A. Cone Collection	cone
<i>Abies fargesii</i> (7004-C)	3/24/1979	A. A.	foliage
<i>Abies fargesii</i> (7004-C)	3/28/1979	A. A.	foliage
<i>Abies faxoniand</i>	4/1/1979	A.A. Cone Collection	cone
<i>Abies firma</i>	4/1/1979	A.A. Cone Collection	cone
<i>Abies firma</i> (370-33)	3/24/1979	A. A.	foliage
<i>Abies fraseri</i>	3/24/1979	200 Highland	foliage and cone
<i>Abies fraseri</i>	3/24/1979	200 Highland	foliage and cone
<i>Abies fraseri</i>	3/28/1979	200 Highland	cone
<i>Abies fraseri</i>	3/28/1979	200 Highland	foliage and cone
<i>Abies fraseri</i>	3/28/1979	200 Highland	foliage and cone
<i>Abies holophylla</i>	3/24/1979	A. A.	foliage
<i>Abies homolepis</i> v. <i>umbrella</i> (5675C)	3/28/1979	A.A.	foliage
<i>Abies koreana</i>	9/1/1977	n.a.	foliage and cone
<i>Abies koreana</i>	3/24/1979	200 Highland	foliage
<i>Abies koreana</i> (20613-D)	3/24/1979	A. A.	foliage
<i>Abies lasiocarpa</i> (538-42B)	3/28/1979	A.A.	foliage
<i>Abies nephrolepis</i> (8123)	3/24/1979	A. A.	foliage
<i>Abies nordwanniana</i> (12427-C)	3/24/1979	A. A.	foliage
<i>Abies pinsapo glauca</i> (839-53)	3/28/1979	A.A.	foliage
<i>Abies procera</i>	3/24/1978	n.a.	habitat
<i>Abies procera glauca</i>	3/24/1979	200 Highland	foliage
<i>Abies sachalinensis</i> (839-56)	3/28/1979	A.A.	foliage
<i>Abies sibirica</i> (290-43A)	3/28/1979	A.A.	foliage
<i>Abies tecuruata</i> (12435-B)	3/28/1979	A.A.	foliage
<i>Abies veitchii</i>	7/24/1982	200 Highland	tree
<i>Abies veitchii</i> (12448-B)	3/24/1979	A. A.	foliage
<i>Abies veitchii</i> (12448-B)	3/24/1979	A. A.	foliage
<i>Acephalonica</i> v. <i>apollomis</i> (12384)	3/28/1979	A.A.	foliage
<i>Acer palmatum</i>	10/30/1982	200 Highland	tree
<i>Acer palmatum</i>	5/21/1983	200 Highland	tree
<i>Acer rubrum</i>	4/21/1979	Blue Hills	flowers
<i>Acer rubrum</i>	9/20/1981	200 Highland	tree

<i>Acer rubrum</i>	9/20/1981	200 Highland	tree
<i>Acer rubrum "schlepingeri"</i>	10/13/1981	A. A.	habitat
<i>Acer rubrum columnaris</i>	10/13/1981	A. A.	habitat
<i>Acer rubrum columnaris</i>	10/13/1981	A. A.	habitat
<i>Acer saccharinum</i>	10/20/1979	Bellows Falls, VT	tree
<i>Acer saccharinum</i>	9/30/1985	A. A.	after Gloria
<i>Acer saccharum</i>	10/31/1980	200 Highland	habitat
<i>Acer saccharum</i>	10/31/1980	200 Highland	habitat
<i>Acer saccharum</i>	11/1/1980	200 Highland	habitat
<i>Aesculus and Amelanehier</i>	10/13/1981	A. A.	habitat
<i>Aesculus glabra</i>	5/20/1981	Mt. Auburn	habitat
<i>Aesculus paroiflora</i>	7/1/1981	Cutting Arboretum	tree
Alder flowers	4/3/1982	Blue Hills	foliage
Ash	10/11/1979	200 Highland	tree
<i>Azeleas</i>	5/13/1980	Rossdohan	habitat
<i>Azeleas</i>	5/1/1983	A. A.	habitat
<i>Azeleas, blue</i>	5/8/1979	n.a.	flowers
<i>Betula albosinensis</i>		Westonbirt, National	
<i>septrimalis</i>	3/26/1978	Arboretum, UK	tree
<i>Betula papyrifera</i>	4/10/1981	200 Highland	tree
<i>Betula papyrifera</i>	4/10/1981	200 Highland	tree
<i>Betula papyrifera</i>	4/29/1984	Mt. Auburn	tree
Birch roots	9/28/1979	Waterville, NH	roots
Birch roots	9/28/1979	Waterville, NH	roots
<i>Blue ceanothus and</i>			
<i>Embothrlum</i>	5/9/1980	Rossdohan	habitat
<i>Brachyglotis</i>	5/9/1980	Rossdohan	foliage
<i>Calocedrus decurrens</i>	11/7/1981	Lyman Park, St. Helena	tree
<i>Cascanea sativa</i>	8/24/1985	Britain (oldest planted	tree
<i>Cascanea sativa</i>	8/24/1985	tree)	
<i>Cascanea sativa</i>	8/24/1985	Britain (oldest planted	tree
<i>Cascanea sativa</i>	8/24/1985	tree)	
<i>Cascanea sativa</i>	8/24/1985	tree)	
Cathedral pines	4/12/1980	Cornwall, CT	habitat
Cathedral pines	4/12/1980	Cornwall, CT	habitat
Cathedral pines	4/12/1980	Cornwall, CT	habitat
Cathedral pines	4/12/1980	Cornwall, CT	habitat
Cathedral pines	4/12/1980	Cornwall, CT	roots
Cathedral pines	4/12/1980	Cornwall, CT	habitat
Cathedral pines	4/12/1980	Cornwall, CT	habitat
Cathedral pines	4/12/1980	Cornwall, CT	habitat
Cathedral pines	4/12/1980	Cornwall, CT	habitat
<i>Cedrus atlantica</i>	5/22/1981	200 Highland	tree
<i>Cedrus atlantica</i>	5/22/1981	200 Highland	tree
<i>Cedrus libani</i>	4/12/1980	Bussey Hill	habitat
<i>Cedrus libani</i>	5/13/1980	Rossdohan	tree
<i>Ch. lawsoniana</i>	3/11/1979	Aptos, Santa Cruz, CA	foliage
<i>Ch. obt. brevirama</i>	4/20/1979	A.A.	foliage
<i>Ch. obt. brevirama</i>	4/20/1979	A.A.	foliage
<i>Ch. obt. brevirama</i>	4/20/1979	A.A.	habitat
<i>Ch. p. squarrosa</i>	3/1/1979	Heimlich's Nursery	tree
<i>Clanthus puniceus</i>	5/1/1981	McKenzie Cottage	foliage
<i>Cocoredlus, are carpinus</i>	11/1/1982	A. A.	habitat

<i>Cornus florida</i>	5/14/1982	200 Highland	tree
<i>Cornus kousa</i>	6/21/1986	Polly Wakefield	habitat
<i>Cornus kousa</i>	6/21/1986	Polly Wakefield	habitat
<i>Cory cordiformis</i>	9/30/1985	A. A.	after Gloria
<i>Corylus avelona contorta</i>	3/16/1984	Wisley	tree
Cotoneaster	9/1/1977	n.a.	tree
<i>Cupressus macrocarpa</i>	5/9/1980	Rossdohan	habitat
<i>Cupressus macrocarpa</i>	5/9/1980	Rossdohan	habitat
<i>Cupressus macrocarpa</i>	3/9/1982	Greyswood Hill, England	tree
Cycad	1/22/1980	Huntington	cone
Cycad	1/22/1981	Huntington	cone
Cystisus	5/21/1983	A. A.	habitat
Cystisus	5/21/1983	A. A.	habitat
<i>Davidua involuocrata</i>	3/22/1979	A. A.	habitat
<i>Davidua involuocrata</i>	5/22/1979	A. A.	foliage
<i>Davidua involuocrata</i>	5/22/1979	A. A.	foliage
<i>Davidua involuocrata</i>	5/21/1983	A. A.	foliage
Dieksonia tree fern	3/1/1982	Ahakista	fiddlehead
Euryops (Capeweed)	1/22/1981	Huntington	habitat
<i>Fagus sylvatica, abbey leix</i>	9/6/1980	200 Highland	tree
<i>Fagus sylvatica, abbey leix</i>	9/6/1980	200 Highland	tree
Ginkgo	10/1/1977	n.a.	foliage
Ginkgo, VAHWR	10/1/1977	n.a.	tree
Golden Rod	10/3/1982	Peter's Hill	habitat
Greyswood pillar	3/9/1982	Greyswood Hill, England	tree
Hedge collection	10/13/1981	A. A.	habitat
Iceland poppies	1/22/1981	Huntington	habitat
<i>J. squanata meyeri</i>	8/1/1979	Shannon Airport	tree
<i>Juglans nigra</i>	9/21/1980	Le Mailly	tree
<i>Juglans nigra</i>	9/21/1980	Le Mailly	tree
<i>Kohlrreuria paniculata</i>	8/1/1979	A. A.	foliage
<i>Kohlrreuria paniculata</i>	8/1/1979	A. A.	tree
<i>Kohlrreuria panniculata</i>	10/13/1981	A. A.	tree
Kolkwitzia	6/8/1983	A. A.	habitat
<i>Larix decidua</i>	9/30/1985	A. A.	after Gloria
<i>Lawson and Thuja plicata culitwars</i>	3/9/1982	Greyswood Hill, England	habitat
<i>Lawson and Thuja plicata culitwars</i>	3/9/1982	Greyswood Hill, England	habitat
<i>Lawson cypress</i>	8/1/1982	Ahakista	habitat
Liquid ambar	11/30/1982	Corte Madera, CA	tree
<i>Lircodendron tulipifera</i>	4/23/1982	West Roxbury	tree
<i>Magn. accum.</i>	12/1/1981	A. A.	destruction
Magnolia	5/1/1983	A.A.	habitat
<i>Magnolia atlanta</i>	5/14/1982	n.a.	flowers
Magnolias	5/1/1983	A. A.	habitat
<i>Malus "frau louia"</i>	5/8/1985	A. A.	habitat
<i>Malus "Rudolph"</i>	5/8/1985	A. A.	habitat
<i>Malus prunifolia</i>	5/8/1985	A. A.	habitat
<i>Malus sp.</i>	5/14/1982	108 Highland, Dedham	tree
<i>Malus sp.</i>	5/1/1983	A. A.	habitat
<i>Malus sp.</i>	5/1/1983	A. A.	habitat
Maples	10/13/1981	A. A.	habitat

Maples	10/13/1981	A. A.	habitat
Metasequoia	10/28/1982	200 Highland	habitat
Metasequoia	10/30/1982	200 Highland	habitat
<i>Myridphyllum</i>	5/15/1981	Ponkapoag bog	foliage
<i>Nothofagus</i>	8/26/1981	Rossdohan	foliage
<i>Oxydendron arboreuim</i>	10/16/1979	A. A.	habitat
<i>P. coulteri</i>	3/10/1979	Tanoak Trail, CA	cone
<i>P. Monticola</i>	4/23/1979	Mt. Auburn	tree, epicormic
<i>P. ponderosa, P. sabinia</i>	11/7/1981	CA	growth
<i>Papuacedrus</i>	3/31/1979	A. A.	habitat
<i>Papuacedrus</i>	4/19/1979	A. A.	foliage
<i>Papuacedrus</i>	4/19/1979	A. A.	tree
<i>Papuacedrus</i>	4/19/1979	A. A.	tree
<i>Papuacedrus</i>	4/19/1979	A. A.	tree
<i>Papuacedrus</i>	4/19/1979	A. A.	foliage
Persimmon	12/31/1984	St. Helena, CA	fruit
<i>Picea</i>	12/1/1980	Ardnasashel	blet
<i>Picea</i>	12/1/1980	Ardnasashel	blet
<i>Picea abies</i>	1/31/1980	A. A.	foliage and cone
<i>Picea abies</i>	1/31/1980	A. A.	foliage
<i>Picea abies</i>	12/7/1981	A. A.	tree
<i>Picea abies acrocma</i>	7/1/1982	n.a.	foliage and cone
<i>Picea asperata</i>	1/1/1980	Hun. Pin.	foliage and cone
<i>Picea aurantiaca</i>	1/31/1980	A. A.	foliage
<i>Picea bicolor</i>	1/1/1980	Hun. Pin.	foliage and cone
<i>Picea breweriana</i>	1/31/1980	A. A.	foliage
<i>Picea breweriana</i>	1/31/1980	A. A.	foliage
<i>Picea breweriana</i>	1/31/1980	A. A.	foliage
<i>Picea engelmannii</i>	1/1/1980	A. A.	foliage and cone
<i>Picea glauca</i>	1/31/1980	A. A.	foliage
<i>Picea glauca</i>	1/31/1980	A. A.	foliage and cone
<i>Picea glehnii</i>	1/1/1980	Hun. Pin.	foliage and cone
<i>Picea jezoensis</i>	1/1/1980	Hun. Pin.	foliage and cone
<i>Picea koyamai</i>	1/1/1980	Hun. Pin.	foliage and cone
<i>Picea mariana</i>	1/31/1980	A. A.	foliage
<i>Picea mariana</i>	1/31/1980	A. A.	foliage
<i>Picea meyeri</i>	1/31/1980	A. A.	foliage
<i>Picea montigena</i>	1/1/1980	Hun. Pin.	foliage and cone
<i>Picea obovata</i>	1/1/1980	Hun. Pin.	foliage and cone
<i>Picea omorika</i>	1/31/1980	A. A.	foliage
<i>Picea orientalis</i>	1/31/1980	A. A.	foliage and cone
<i>Picea polita</i>	1/1/1980	Hun. Pin.	foliage and cone
<i>Picea pungens</i>	1/1/1980	A. A.	foliage and cone
<i>Picea purpurea</i>	1/1/1980	A. A.	foliage and cone
<i>Picea rubens</i>	1/31/1980	A. A.	foliage
<i>Picea rubens</i>	1/31/1980	A. A.	foliage and cone
<i>Picea rubens</i>	12/1/1981	Grafton, VT	habitat
<i>Picea rubens</i> (23199)	12/7/1981	A. A.	habitat
<i>Picea schrenkiana</i>	1/1/1980	A. A.	foliage
<i>Picea schrenkiana</i>	1/1/1980	A. A.	foliage
<i>Picea sp.</i>	12/1/1980	Ardnasashel	blet
<i>Picea sp.</i>	12/1/1980	Ardnasashel	blet
<i>Picea sp.</i>	12/1/1980	Ardnasashel	spray

<i>Picea sp.</i>	12/1/1980	Ardnasashel	spray
<i>Picea sp.</i>	12/1/1980	Ardnasashel	spray
<i>Picea wilsonii</i>	1/31/1980	A. A.	foliage and cone
<i>Picea wilsonii</i>	1/31/1980	A. A.	foliage and cone
<i>Pieris foresteri</i>	4/13/1980	n.a.	branchlet
<i>Pinus mugo</i>	7/19/1982	Howland Estate, Weston	tree
<i>Pinus mugo</i>	7/19/1982	Howland Estate, Weston	tree
<i>Pinus pseudostrobus</i>	8/1/1979	Mexico	tree
<i>Pinus pumila</i>	4/20/1979	A. A.	cone
<i>Pinus pumila</i>	4/20/1979	A. A.	cone
<i>Pinus pumila</i>	4/25/1980	A. A.	cone
<i>Pinus radiata</i>	11/29/1982	Carmel Valley	habitat
<i>Pinus rigida</i>	10/13/1980	Red Brook	habitat
<i>Pinus strobus</i>	4/11/1980	CT Route 86	habitat
<i>Pinus strobus</i>	4/11/1980	CT Route 86	habitat
<i>Pinus strobus</i>	4/11/1980	Mass Pike	habitat
<i>Pinus strobus</i>	4/11/1980	Mass Pike	habitat
<i>Pinus strobus</i>	4/12/1980	Bussey Hill	habitat
<i>Pinus strobus</i>	10/26/1981	Pinetum at Batchawana, Ontario	habitat
<i>Pinusdens, flora</i>	9/1/1977		foliage
<i>Poreopsis gigantea</i>	12/28/1984	CA	habitat
<i>Prunus</i>	5/1/1983	A. A.	habitat
<i>Prunus</i>	5/1/1983	A. A.	habitat
<i>Prunus subhirtella</i>	4/29/1984	Mt. Auburn	tree
<i>Prunus subhirtella</i>	4/29/1984	Mt. Auburn	tree
<i>Pseudotsuga and Junip occidentalis</i>	1/23/1981	Joshua Tree Rancho, Santa Ana, CA	habitat
<i>Pyrus calleryana</i>	11/18/1982	Dedham	tree
<i>Quercus palustris</i>	9/30/1985	A. A.	after Gloria
Quince	10/1/1977	n.a.	fruit
Red Maple	4/30/1982	West Roxbury	tree
<i>Red robinia</i>	6/3/1983	Mt. Auburn	tree
<i>Red robinia</i>	6/3/1983	Mt. Auburn	tree
Rhododendrons	6/1/1980	A. A.	habitat
Rhododendrons	6/3/1983	A. A.	habitat
Rhododendrons	6/8/1983	A. A.	habitat
<i>Rhus aromatica</i>	7/12/1980	Blue Hills	foliage
<i>Robinia hispida</i>	6/9/1984	A. A.	tree
<i>Samaras</i>	10/1/1977	n.a.	foliage
<i>Sorbus</i>	10/3/1982	Peter's Hill	foliage
<i>Spirea meadow sweet</i>	7/12/1980	Blue Hills	foliage
Spruce	9/28/1979	Waterville, NH	roots
Spruce and Hemlock	6/1/1982	n.a.	alcohol glycerine treatment
Sugar maple	10/28/1982	200 Highland	habitat
<i>Taxodium</i>	11/1/1977	n.a.	tree transplant
<i>Taxodium</i>	1/1/1986	Loxahatchie River	habitat
<i>Thuja</i>	12/1/1980	Ardnasashel	spray
<i>Thuja</i>	12/1/1980	Ardnasashel	spray
<i>Thuja occidentalis</i>	11/6/1982	n.a.	habitat
<i>Thuja plicata</i>	8/1/1981	Rossdohan	habitat
Westfield pines	5/14/1980	Ahakista	habitat

Westfield pines	5/14/1980	Ahakista	habitat
Westfield pines	5/14/1980	Ahakista	habitat
White Paulownia	4/24/1980	Athens, GA	habitat
Willow	12/30/1984	Pt. Reyes, CA Joshua Tree Rancho, Santa Ana, CA	tree
<i>Yucca brevifolia</i>	1/22/1981	Santa Ana, CA	habitat
	10/1/1977	n.a.	strand of leaves
	5/2/1978	A.A.	habitat, south third of pinetum
	5/2/1978	A.A.,	habitat, middle third of pinetum
	2/17/1980	200 Highland	snow scene
	2/17/1980	200 Highland	snow scene
	4/12/1980	Bussey brook and field	habitat
	7/4/1980	200 Highland, Boot Toe	habitat
	7/4/1980	200 Highland, Boot Toe	habitat
	7/4/1980	200 Highland, Boot Toe	habitat
	7/5/1980	200 Highland, Boot Toe	habitat
	11/3/1980	200 Highland	habitat
	1/22/1981	Huntington	tree
	10/13/1981	A. A.	habitat
	7/19/1982	Howland Estate, Weston	friends
	10/20/1982	200 Highland	habitat
	10/20/1982	200 Highland	habitat
	10/30/1982	Bussey Hill, A. A.	habitat
	12/1/1982	A. A.	habitat
	5/8/1985	A. A.	habitat
	8/14/1985	A. A.	habitat
	8/25/1985	Crarae Gardens, Loch Fyne	habitat
	8/28/1985	Murthley Castle	habitat
	8/28/1985	Murthley Castle	habitat
	10/1/1985	A. A.	after Gloria
	7/1/1986	200 Highland	habitat
	8/1/1986	200 Highland	habitat
	8/1/1986	200 Highland	habitat
	8/1/1986	200 Highland	habitat